

Corktown



Corktown



Above Corktown, view North on John Street

Corktown celebrates the dynamic history of Hamilton, ON and embodies the promising future of the growing city.

Building on the city's thriving industries — technology, arts, culture, and education — Corktown celebrates a new era of possibilities.

Hamilton is a city of endless potential. From its post-industrial identity to its status as a hub for arts and culture, and innovation and research, Corktown invites you to live in an enthusiastic and growing Hamilton.

With new energy fueling the city, an incredible opportunity for continued growth follows. Hamilton is a place where history meets modernity, where innovation meets tradition. Corktown curates an energetic and unique way to experience Hamilton.

Hamilton's history is rich and diverse. Historically known as the industrial heart of Canada, Hamilton continues to grow as one of the most vibrant and exciting communities in Ontario. The connection of Hamilton Harbour to Lake Ontario in the 1800s and the amalgamation of surrounding communities in 2001 led to its rapid development — a city of innovation, creativity, and imagination.



Above Stelco Steel Facility, Hamilton, ON

Anchored by stable and growing manufacturing, research, innovation, import and export industries, as well as top academic institutions, Hamilton is a city on the rise.

Famously known as “Steel City” for a booming steel industry, Hamilton is experiencing a culturally rich revitalization. The ever-growing industries and convenient transportation connections continue to attract young professionals and new immigrants.

Past

Present



Hamilton Street Railway [1]

1874

The Hamilton Street Railway was constructed, beginning with the first horse-drawn tram leaving the Grand Trunk Railway Stuart Street Station.

1930

McMaster University was relocated from Toronto to Hamilton following a land gift and financing from citizens and graduates to build a science building.



Hamilton City Hall [4]

2021

Hamilton celebrated the 175th anniversary of the city's founding.

1846

Hamilton was established as a city.

1910

The Steel Company of Canada, Stelco's original title, was founded in Hamilton.



Steel Company of Canada [2]

1965

McMaster University established a medical school and teaching hospital, going on to pioneer "problem-based learning".



Library at McMaster University [3]

2022

Slate Asset Management acquired the Stelco lands, an approximately 800-acre site on the harbourfront of Hamilton.

[1] Photo: Hamilton Street Railway car no. 406, 1940. Source: Library and Archives Canada/Andrew Audubon Merrilees fonds/c014666264

[2] Photo: Aerial view of Hamilton Works, ca. 1952. Source: Library and Archives Canada/The Steel Company of Canada (Stelco) fonds/c01169520

[3] Photo: Students Margaret Elliott of Bramford (seated) and Margi Barnum of Aylmer in the Mills Memorial Library at McMaster University, 1949. Source: Library and Archives Canada/Dept. of Mappower and Immigration fonds/c01055642-v8

[4] Photo: City Hall, Hamilton, Ont. Source: Library and Archives Canada/Department of the Interior fonds/a048108



Above Steelport Project Team

Right Future Steelport Redevelopment Site

Steelport will be a global foundry of all industry: from logistics centres and production hubs to traditional and innovative tech and design manufacturing. Steelport has the potential to produce up to 23,000 new employment opportunities across the Greater Toronto & Hamilton Area (GTHA) and introduce up to \$3.8 billion into Ontario's economy, according to a 2021 EY study.

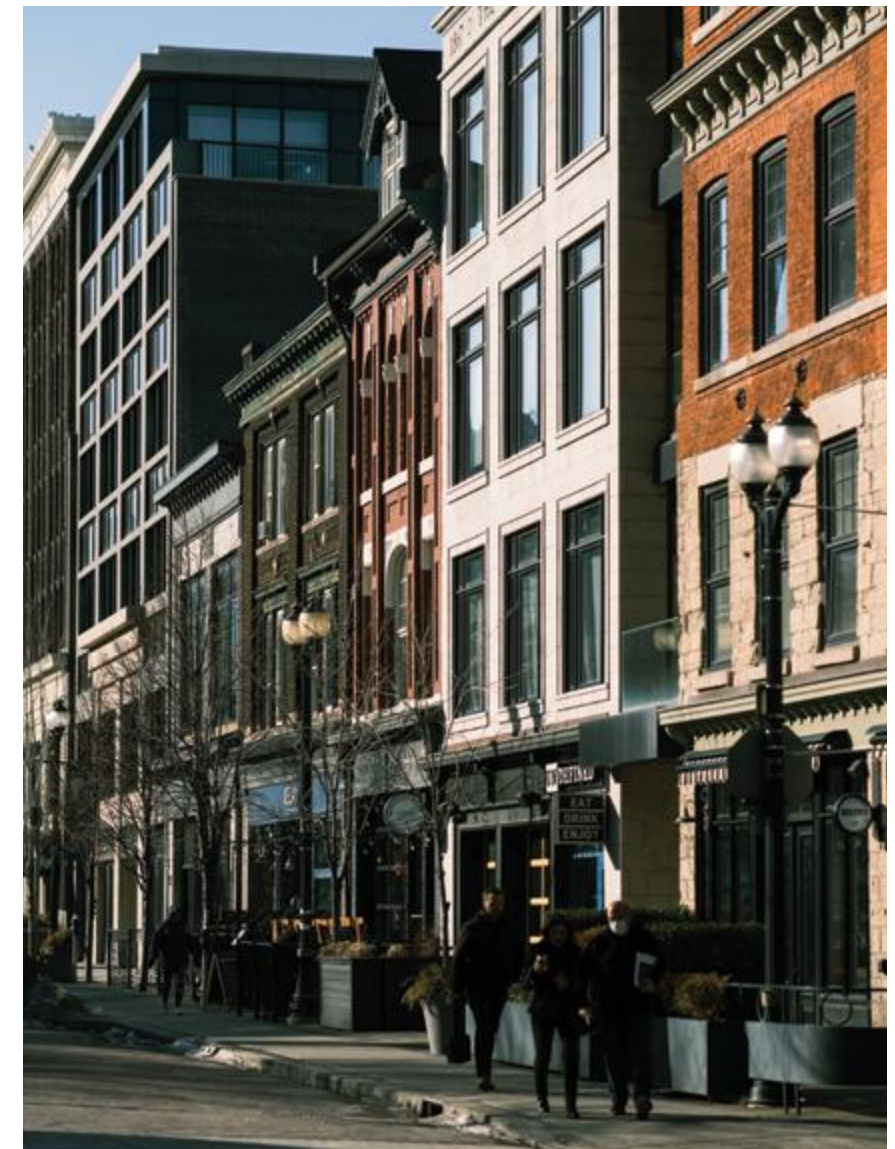
Today, Hamilton has a workforce of about 400,000 with ample opportunities for investment. The city boasts a diverse economy with sectors such as steel production and technology, as showcased by the presence of many large employers. Prominent fulfillment centres in Hamilton, together with established steel companies, provide many job opportunities contributing to Hamilton's strong and steady employment rate.

Slate Asset Management is committed to long-term city-building. In addition to Corktown, Slate is leading the monumental redevelopment of Steelport, a historic industrial site on the Hamilton Waterfront spanning approximately 800 acres.

Slate is reimagining the site to be a world-class industrial park, connecting rail, road, and water that will bring opportunity to the City and connect the region to the world.



Hamilton has always championed arts and culture; it is known as a creative hub. Today, the city attracts large scale film and television production, burgeoning artists and galleries, as well as music producers and numerous festivals. These complement the well-established health, manufacturing, technological, and education institutions that Hamilton is known for.



Left Hamilton GO Centre

Centre McMaster University Hall, Hamilton, ON

Right King William Street, Hamilton, ON

Corktown is located at the nexus between the lively downtown and Hamilton's nature paths and views. It is the most well-connected site, offering proximity to restaurants and bars, but also the calm and sophistication of one of Hamilton's oldest neighbourhoods.

Restaurants and Cafés

1	Motel Restaurant
2	The Mule
3	SYNONYM
4	MERIT Brewing Company
5	Berkeley North
6	CIMA Enoteca
7	Secco
8	The French
9	Collective Arts Brewing
10	Detour Café
11	Bon Temps

Retail and Shopping

12	Jackson Square
13	STOREonjames
14	Studio 205
15	Vintage Charm
16	Bodega Wellness
17	CF Lime Ridge

Entertainment

18	FirstOntario Centre
19	Art Gallery of Hamilton

Grocers and Markets

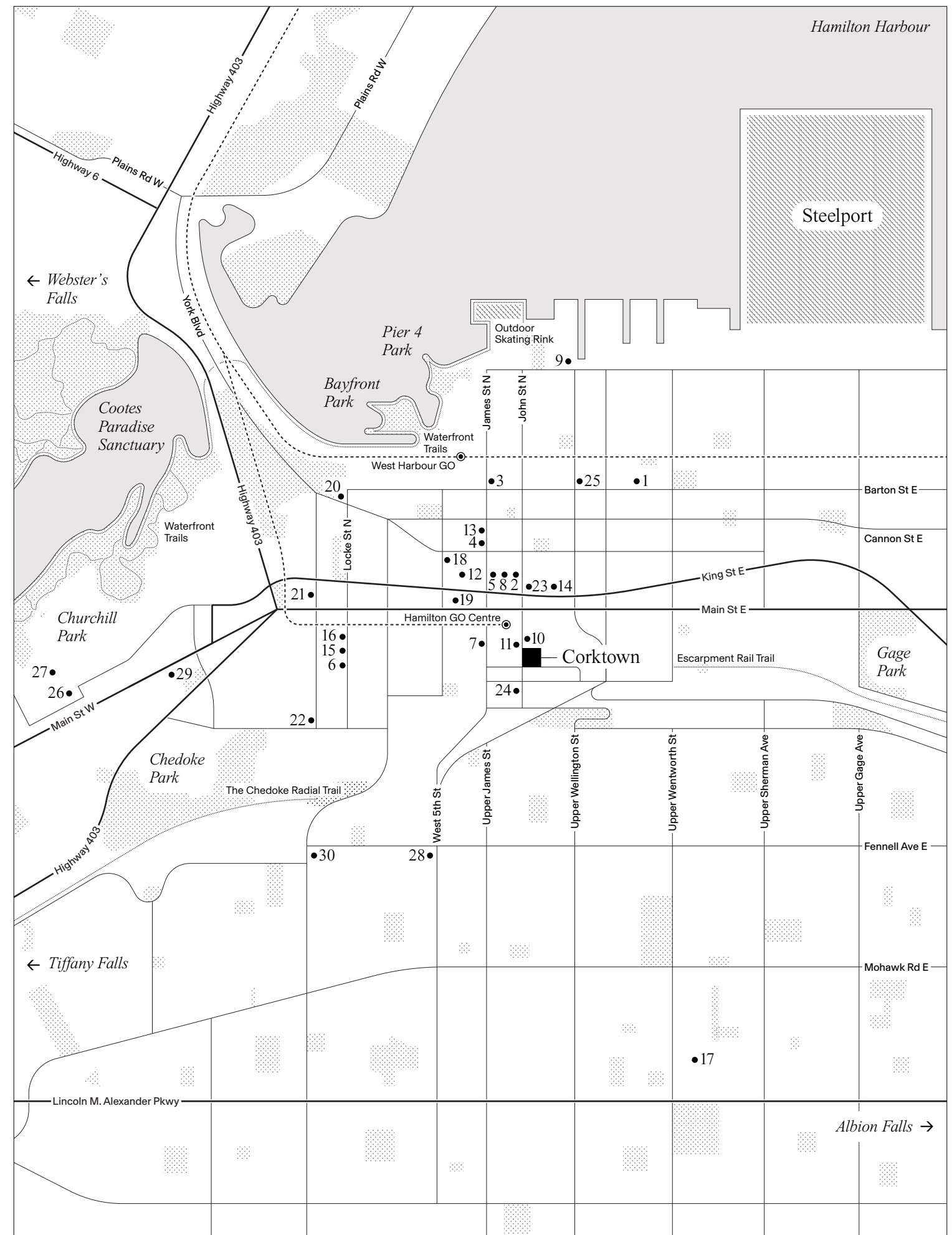
20	Strathcona Market
21	Fortinos
22	Dundurn Market
23	Gastro Market

Hospitals and Medical Centres

24	St. Joseph's Healthcare Hamilton
25	Hamilton General Hospital
26	McMaster University Medical Centre

Education

27	McMaster University
28	Mohawk College
29	Columbia International College
30	Hillfield Strathallan College





Pier 4 Park, 64 Leander Drive, Hamilton, ON



Hess Village, 30 Hess Street South, Hamilton, ON

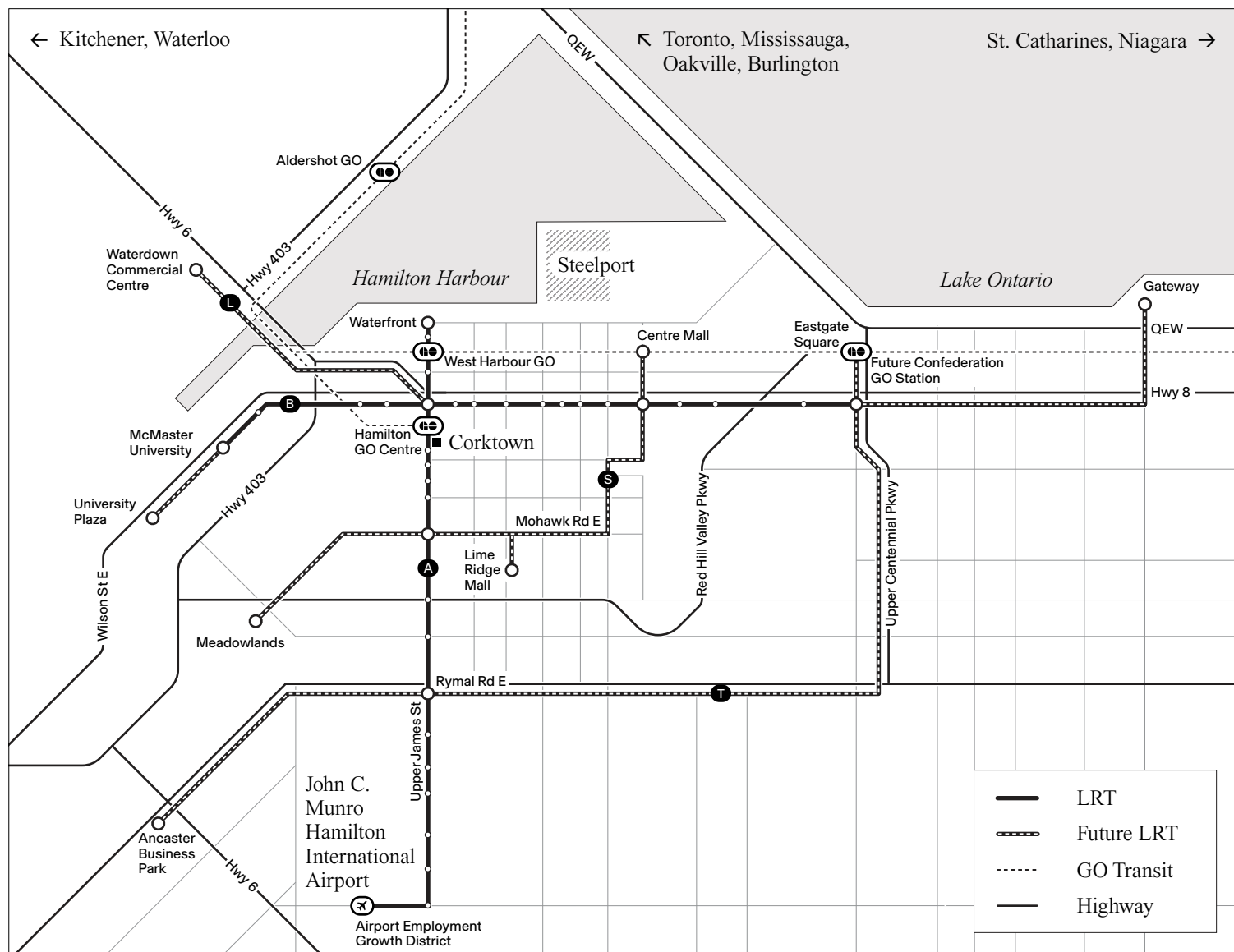


Tew's Falls, 581 Harvest Road, Hamilton, ON



RELAY Coffee Roasters, 27 King William Street, Hamilton, ON

Hamilton has so much to offer. The Downtown core has celebrated local and international chefs and the city is surrounded by an abundance of greenery – nature trails, parks, waterfalls. Corktown sits at the base of the Mountain, on the edge of the vibrant downtown and the inviting, residential neighbourhoods.



Above Hamilton Transit Network



The prime location of Corktown allows residents to establish themselves as commuters to Toronto and locals to Hamilton. The Hamilton GO Centre and future LRT station are just minutes from your doorstep. With direct and easy access to so many transportation hubs, you have endless opportunities to take advantage of all the things the city has to offer, locally or beyond.

Establish yourself at Corktown. The residential condominium is connected to everything that makes Hamilton energetic and unique, including access via water, road, rail, and international air.

Nature

Situated at the base of the Niagara Escarpment, Corktown's backyard opens to a network of nature trails and views from the Mountain.

Downtown Core

Residents of Corktown will be surrounded by a variety of neighbourhood amenities: from local coffee shops to high end restaurants, historic pubs and new breweries.

Hamilton's Growing Economy

An economic powerhouse, Hamilton's strong economy has created a dynamic workforce. The city is supported by stable immigration rates which are expected to increase.

Highway Connections

- 35 minutes to Mississauga via Highway 403
- 45 minutes to Toronto via Highway 403
- 55 minutes to Kitchener via Highway 6
- 45 minutes to Niagara via Queen Elizabeth Way

GO Transit

- 39 minutes to Oakville via Hamilton GO Centre
- 73 minutes to Mississauga via Hamilton GO Centre
- 86 minutes to Toronto via Hamilton GO Centre
- 99 minutes to Niagara via Hamilton GO Centre



Above Corktown, view North

Renderings are artist's concept only. E. & O. E.



Renderings are artist's concept only. E. & O. E.

Above Corktown, Lobby Entrance

Corktown blends a modern minimalist façade with a dimensional grid synonymous with industrial architecture. With floor-to-ceiling windows, residents will benefit from breathtaking views that showcase the unique topography that characterizes Hamilton. Experience the perfect blend of history and modernity in this architectural masterpiece making Corktown forever part of Hamilton’s evolving landscape.

Corktown celebrates its surroundings with the residential tower rising above Hamilton’s stunning tree canopy. The suites will offer unparalleled views of lush landscape, the city’s downtown core, and Lake Ontario. Every urban convenience is within walking distance: places to shop, to dine, to experience, to explore.

In the past 5 years, Hamilton has flourished to a lively city, celebrating its storied heritage, and embracing innovation. From creative industries such as film and television production, art, and music, to the health and education sectors, Hamilton has sustained massive growth.



Renderings are artist's concept only. E. & O. E.

Above Corktown East, Residential Lobby with Lounge

West Wall Artwork by Alexander Jowett. Contact galler@alisonmilne.com with inquiries.

Offering a sense of arrival, the grand lobby and concierge provide a dynamic communal space for relaxation and social interaction. Featuring large scale artwork displays, the boutique hotel-inspired lobby fills with natural light, to welcome you home.



Above Yoga Studio

East Amenities	West Amenities
Residential Lobby with Lounge	Residential Lobby with Lounge
Outdoor Terrace and Lounge Area	Outdoor Terrace and Lounge Area
Gym and Yoga Studio	Outdoor Pool
Multipurpose Room	Indoor Wellness Area

The building's interior design and programming has been thoughtfully curated by the award-winning team at Mason Studio. The spaces are inspired by the city of Hamilton and reflect the needs of the building's residents.

For health and fitness, Corktown features an impressive Gym and Yoga Studio. Spread across the

upper most floor of the tower, these spaces reveal panoramic views of the city's downtown core, waterfront, and ravines.

The amenities of Corktown nod to the city's storied past and incorporate modern elements to respond to every resident's desire.



Above Outdoor Terrace and Lounge Area



Above Outdoor Pool



Above Corktown Suite facing East

Drawing inspiration from Hamilton's industrial identity, Mason Studio designed the interiors of Corktown to have a sense of character and warmth. Natural light, high ceilings, and smart design provide livable and inviting suites. Each apartment offers beautiful finishes and classic colour palettes. Materials range from light-oak wood to subtly textured quartz. Top tier appliances and premium features and finishes — such as matte black faucets and plumbing — complement each suite.

Designed for both comfort and functionality, the kitchens at Corktown respond to residents' ever-evolving needs. Providing a dynamic space to host dinner parties or try a new recipe, it is the perfect backdrop for luxury living. Bathed in natural light and equipped with quality finishes, the kitchens at Corktown are built to be the heart of the home.



Above Kitchen, Light Palette with Island



Renderings are artist's concept only. E. & O.E.

Above Kitchen, Dark Palette with Island



Above Corktown Suite facing South



Renderings are artist's concept only. E. & O. E.

Above Bedroom with Walk-in-Closet

Right Bathroom, Light Palette with Shower

The contemporary and efficient suite design extends to the bathrooms. With a larger footprint, the bathrooms are more open and spacious. A thoughtful curation of fixtures, finishes, and open vanity are a subtle nod to the city's industrial history while being modern and stylish.



Renderings are artist's concept only. E. & O. E.



CORE Architects has designed livable floor plans, thoughtfully designed for all residents. Whether you work from home, enjoy an in suite-workout, or welcome guests, the dens at Corktown can be tailored to accommodate your changing needs.

Left Den, Bedroom Configuration

Above Den, Office Configuration



Renderings are artist's concept only. E. & O. E.

Above Corktown Suite facing North



Above One Delisle by Slate Asset Management

Slate Asset Management is a global alternative investment platform targeting real assets. Slate focuses on fundamentals with the objective of creating long-term value for its investors and partners. The firm is supported by exceptional people and flexible capital, which enables the origination and execution of a wide range of compelling investment and development opportunities.

Slate Asset Management has a proven track record of investing in neighbourhoods with the objective of embracing and enhancing both past and present community narratives. Slate's in-house development team has a history of global development and projects across all asset classes, including residential condominium, purpose-built rental, retail, office, and industrial.

Slate is known for its placemaking initiatives, including large-scale public art contributions, improvements to the public realm, and exciting retail, which creates ample employment opportunities within its communities. These initiatives are gaining a stronghold in the Hamilton market with the revitalization of Steelport, the former Stelco Steel Plant along the waterfront, and the redevelopment of Corktown Plaza.



Phlegm, *1 St. Clair Avenue West Mural*, 2016



birdO, *1 St. Clair Avenue East Mural*, 2019



Gensler, *Ravine Bench*, 2017



Petra Cortright, *NFT Collection at One Delisle*, 2021

Slate has invested in numerous installations, murals, and public art pieces across its portfolio — these investments are a valuable component of proper city-building and the activation of dynamic communities. As part of the firm's ongoing commitment to the

communities in which it builds, owns, and operates, Slate will deliver public artworks and public realm improvements that promote and celebrate the cultural vitality of the Corktown neighbourhood.

Slate Asset Management continues to raise the standard for outstanding quality design and superior value. Corktown is comprised of design-forward homes and stunning amenities set in a highly coveted area. The prime location of Corktown allows residents to establish themselves — as commuters to Toronto, as locals to Hamilton. Corktown is an opportunity to experience the best that Hamilton has to offer — at home, and in the city.



Above Junction House by Slate Asset Management

CORE Architects

CORE Architects is an award-winning architectural firm with over 120 architects and interior designers based in Toronto. Since their formation in 1994, CORE Architects has quickly distinguished themselves amongst their competitors by their innovative yet thoughtful design solutions.

The firm's founding principals, Babak Eslahjou, Charles Gane, and Deni Poletti share a design philosophy that focuses on creativity, innovation and sustainability; and a business vision that is client-focused, that strives to maximize efficiency while meeting schedule and budgetary constraints.

Janet Rosenberg & Studio

Janet Rosenberg & Studio (JRS) has been creating beautiful landscapes and intelligent urban spaces for almost forty years. Characterized by a dynamic and creative approach to design, a strong commitment to sustainability, and a sophisticated cross-disciplinary approach to projects, JRS is one of Canada's most esteemed landscape architecture and urban design firms. The expansive and award-winning portfolio of JRS includes public, commercial, and institutional spaces, alongside private residential gardens, green roofs, and condominium towers. These ecologically-minded landscapes are conceived of in dialogue with their urban surroundings, and are designed to engage, excite, and enhance the quality of life of those who experience and inhabit them.

Mason Studio

Mason Studio is an interior design firm based in Toronto, with a practice that spans the world. They specialize in a wide array of work. From award-winning luxury hospitality, retail, and multi-unit residential design projects, to experimental exhibitions, with every project, they use design as a tool to create meaningful experiences that enrich the lives of everyone they touch.

RAD Marketing

RAD Marketing works with top tier developers, designers, and architects to push the boundaries of pre-construction real estate sales and marketing. With a team of experts who have over 30 years of combined experience in marketing and sales selling over 12,000 condos, RAD Marketing has worked on some of the most iconic projects in the GTA and abroad.

RAD Marketing takes on thoughtfully curated projects with forward thinking developers to elevate projects by fusing architecture, design, creative marketing, and a strong sales strategy. As a result, RAD Marketing has generated higher sales revenue and velocity in the nodes of the city we have worked in redefining these neighbourhoods.

Corktown Condos in Downtown Hamilton

corktown.condos

A Project by Slate Asset Management

A PROJECT BY
SLATE

COREARCHITECTS


RAD MARKETING

East