

THE REBE

C

C

A

DESIGNED FOR OUR CITY
R
THE REBECCA



ROSEHAVEN HOMES REBECCA CONDOS ROSEHAVEN HOMES REBECCA CONDOS ROSEHAVEN HOMES REBECCA CONDOS ROSEHAVEN HOMES REBECCA CONDOS ROSEHAVEN HOMES REBECCA CONDOS



JOHN REBECCA PARK

A CONDO MADE FOR YOU

THE REBECCA CONDOS

World-class architecture, pedestrian-friendly streetscapes, and stylish amenities set in a city with an art, culture, and dining scene among the best in the nation – this is **THE REBECCA**.

The Rebecca is a new community from one of the GTA's leading condo builders with an internationally renowned team of architects and designers. Authentic. Vibrant. Cultured. Youthful. Connected. At The Rebecca, we have created a unique atmosphere to reflect this city and the people who live here. It's a community for people like you.

ROSEHAVEN HOMES REBECCA CONDOS ROSEHAVEN HOMES REBECCA CONDOS ROSEHAVEN HOMES REBECCA CONDOS ROSEHAVEN HOMES REBECCA CONDOS



THE

STREETSCAPE

The street level at The Rebecca will be a revitalized, pedestrian-friendly thoroughfare. The Scandinavian design, known as a “woonerf,” has become popular in Europe, with wide boulevards, beautiful landscaping, charming seating areas, and amenities that blend indoor and outdoor spaces. Here, style, design, and convenience converge.

ARCHITECTURE



REBECCA

*Artist's concept

JOHN REBECCA PARK

THE REBECCA has been built with a facade of glass and stone. A modernist, reflective glass tower sits atop a 12-storey podium whose design is a nod to the city's legacy.

Terraces and balconies on the majority of The Rebecca's suites offer lake or park views. Floor-to-ceiling windows maximize natural light in every condo and common area – even in the parking lot. Suites have been laid out to maximize space and versatility to suit every living situation.

Rooftop podium common areas and other shared amenities are thoughtfully designed to balance privacy for work or more intimate gatherings with larger areas for dining, lounging, or playing.

477

OF UNITS

30

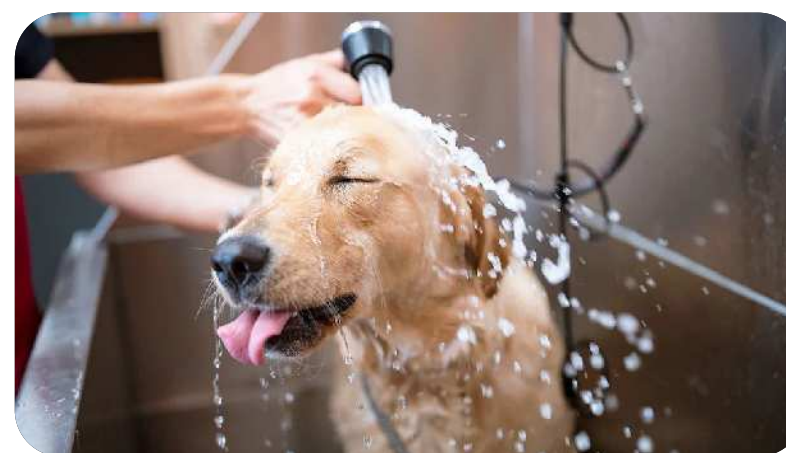
OF FLOORS

16,243

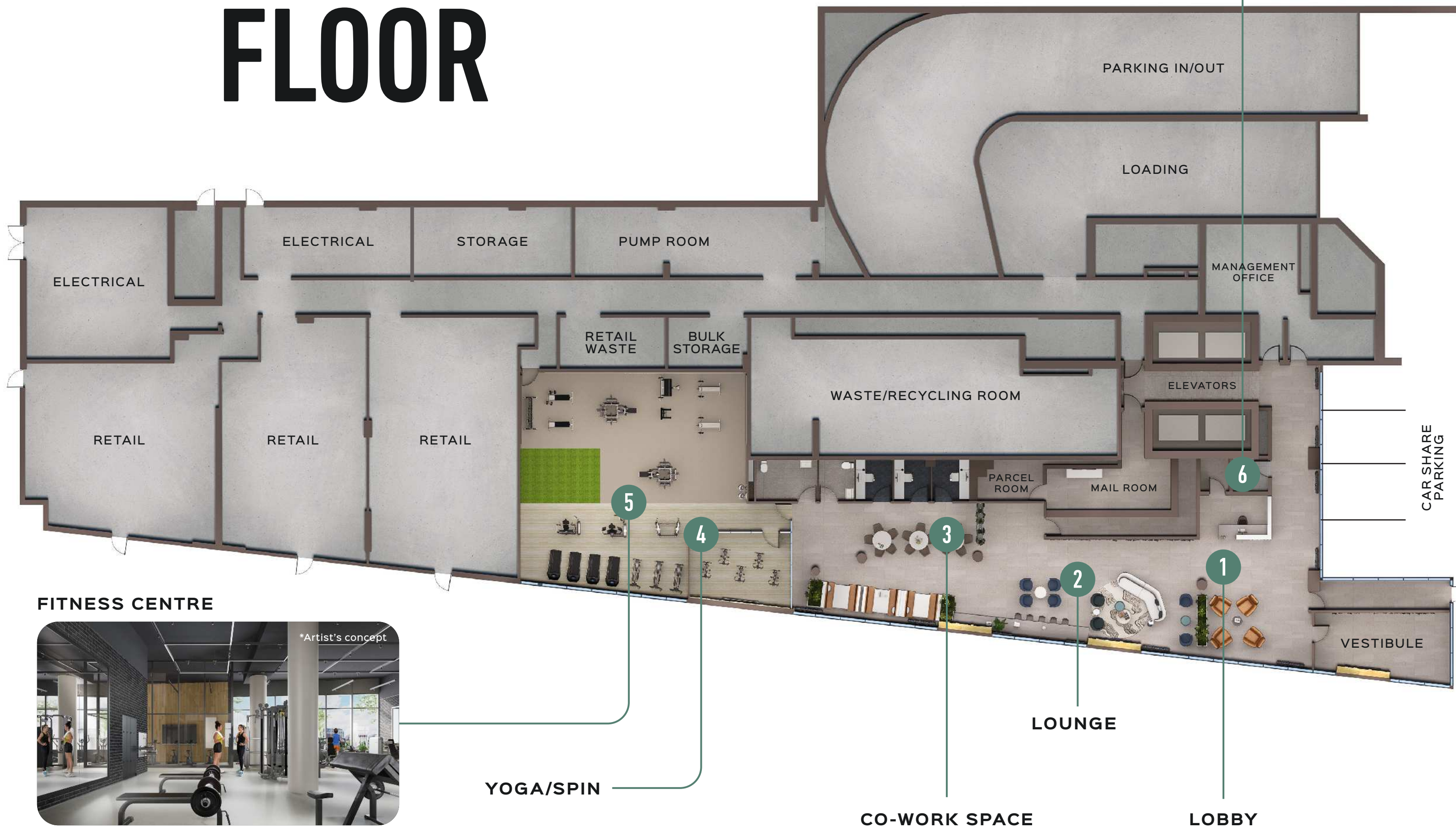
SQ.FT. OF COMMON AMENITY SPACE

THE GROUND FLOOR

PET SPA



*Artist's concept



FITNESS CENTRE



*Artist's concept

YOGA/SPIN

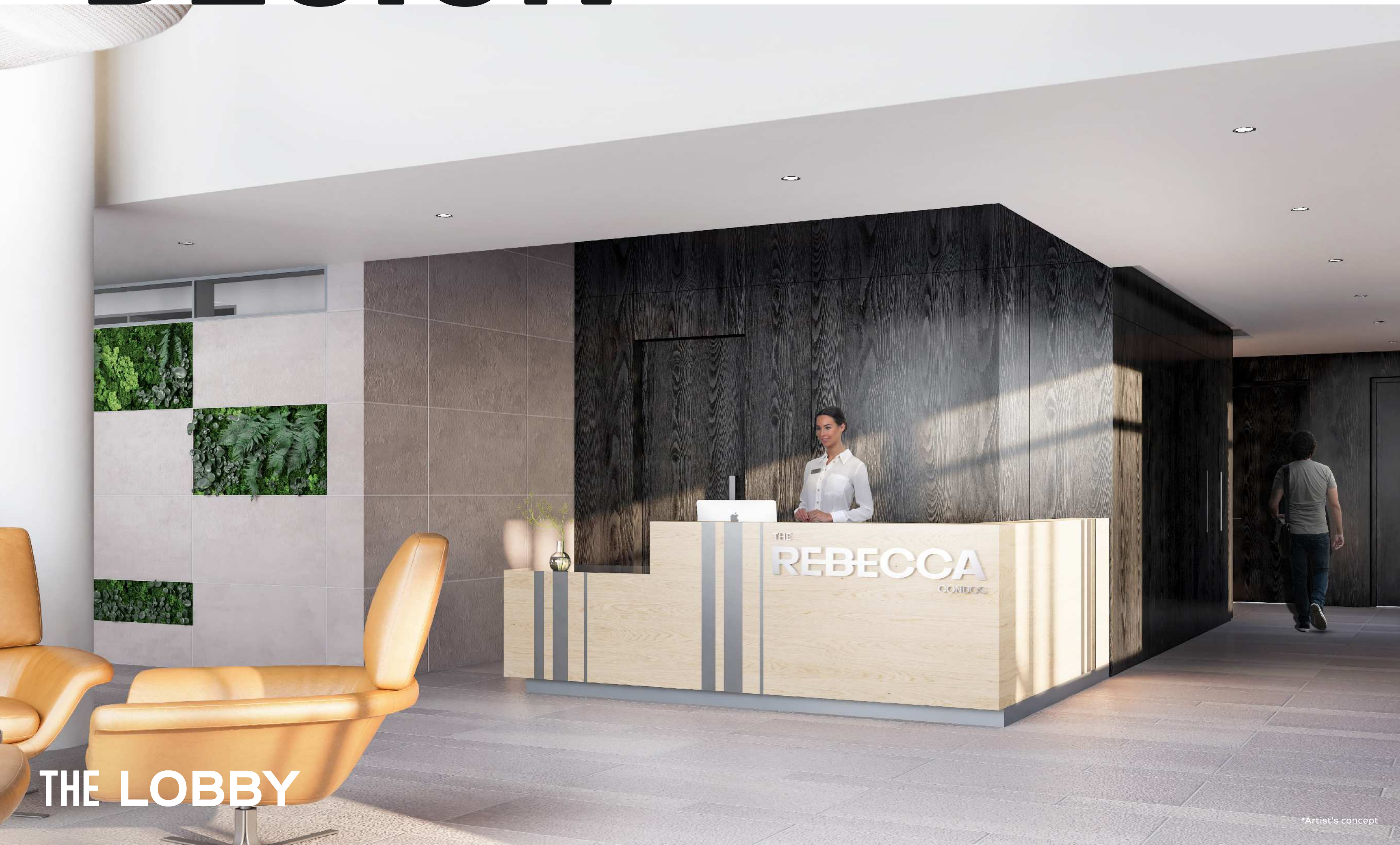
CO-WORK SPACE

LOUNGE

LOBBY

DESIGN

The design team drew on several influences to reflect the local character of Hamilton. The lobby, elevators, and video-conferencing spaces feature art that pays homage to the city's music scene. Greenery and soft moss stand in sharp contrast to the concrete and wood elements in the lobby, softened by billowing light fixtures and warm, neutral upholstery.



THE LOBBY



**GROUND FLOOR
LOUNGE**



CO-WORK SPACE

*Artist's concept



*Artist's concept

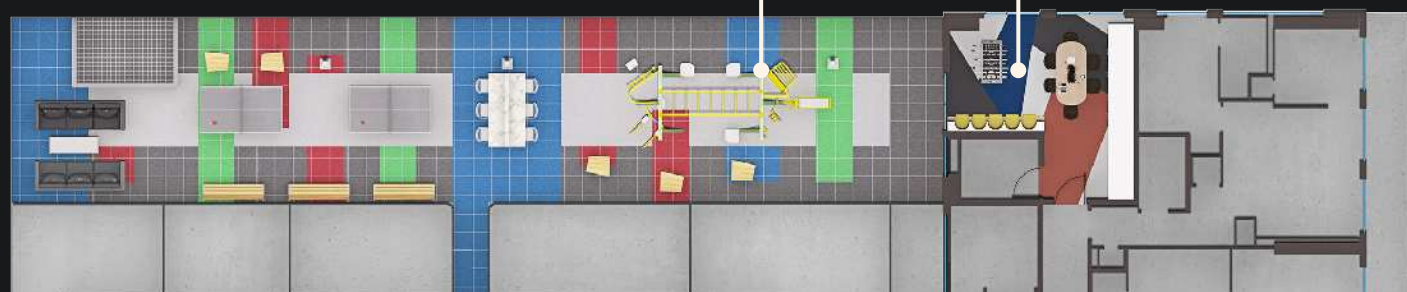
THE FITNESS CENTRE

The Rebecca includes a fully equipped modern fitness studio, complete with a Yoga/Spin room. With stylish accents, layouts optimized for movement, brand-new equipment, and facilities designed for function and privacy, you'll feel like a member at a top-tier club. Work out with friends, residents or on your own, at The Rebecca Condos,

THE SIXTH FLOOR

OUTDOOR TERRACE

GAMES ROOM



*Artist's concept

The games space on the sixth floor is equal parts playful and functional, with table games, exercise equipment and an outdoor terrace overlooking the city.

THE SIXTH FLOOR

GAMES ROOM



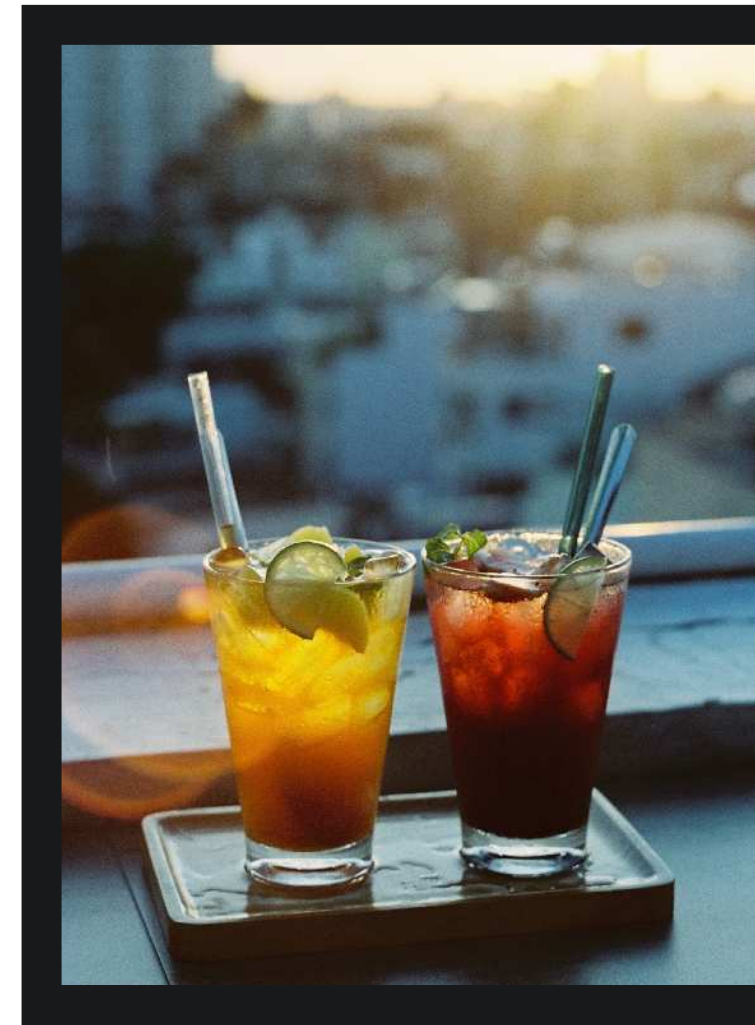
*Artist's concept

THE THIRTEENTH FLOOR

ENTERTAIN



*Artist's concept



A rooftop podium where you can enjoy the gardens, gazebos, fireplaces, and outdoor seating areas. The indoor lounges blend seamlessly with the outdoor space giving the overall amenity space a resort-style feel, right in the heart of urban Hamilton.

Entertaining areas are buffered by fireplaces, feature walls, thoughtfully arranged lounges, high-tables, dining, and kitchen spaces, perfect for any social function – from private events to casual evening drinks.

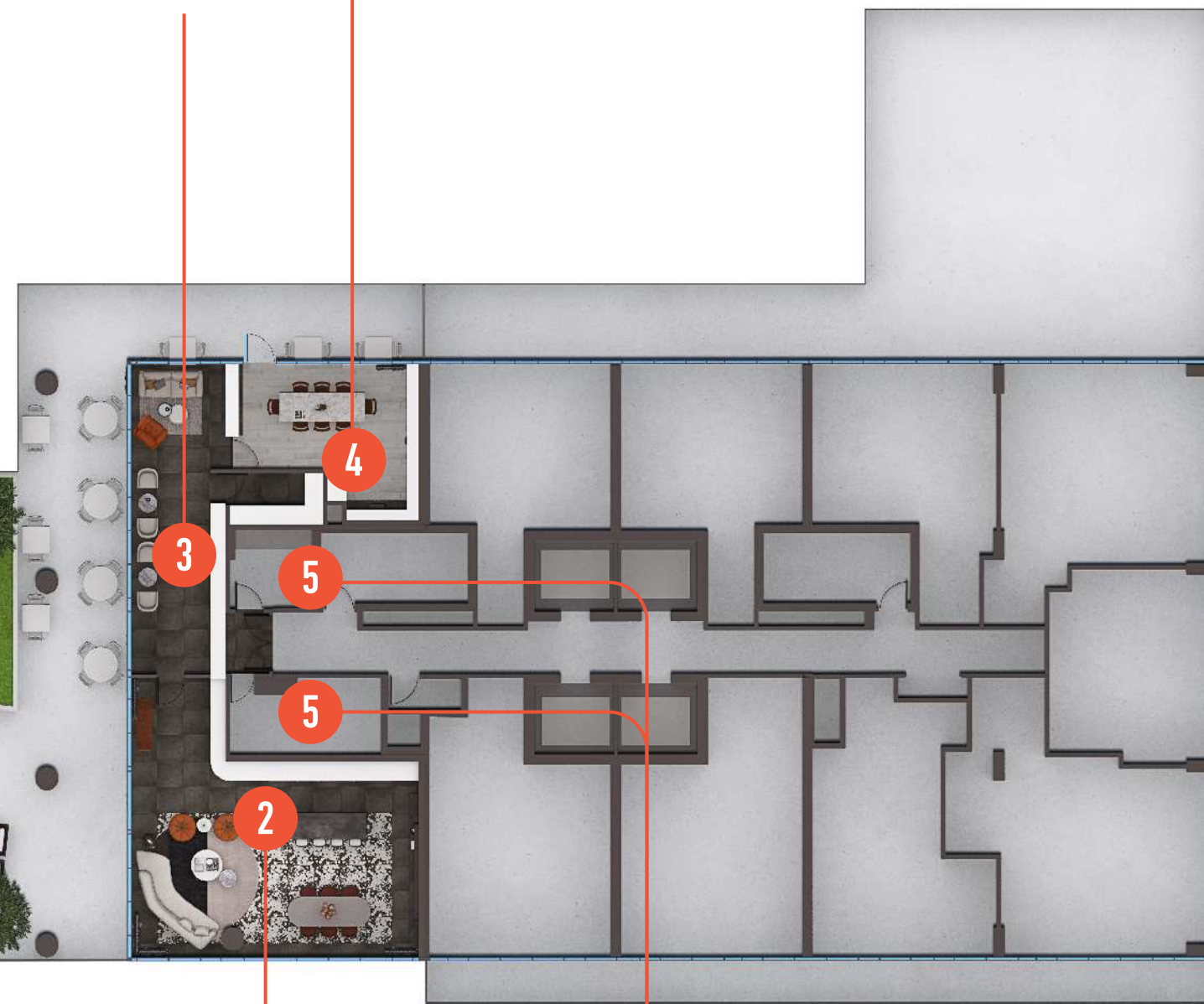
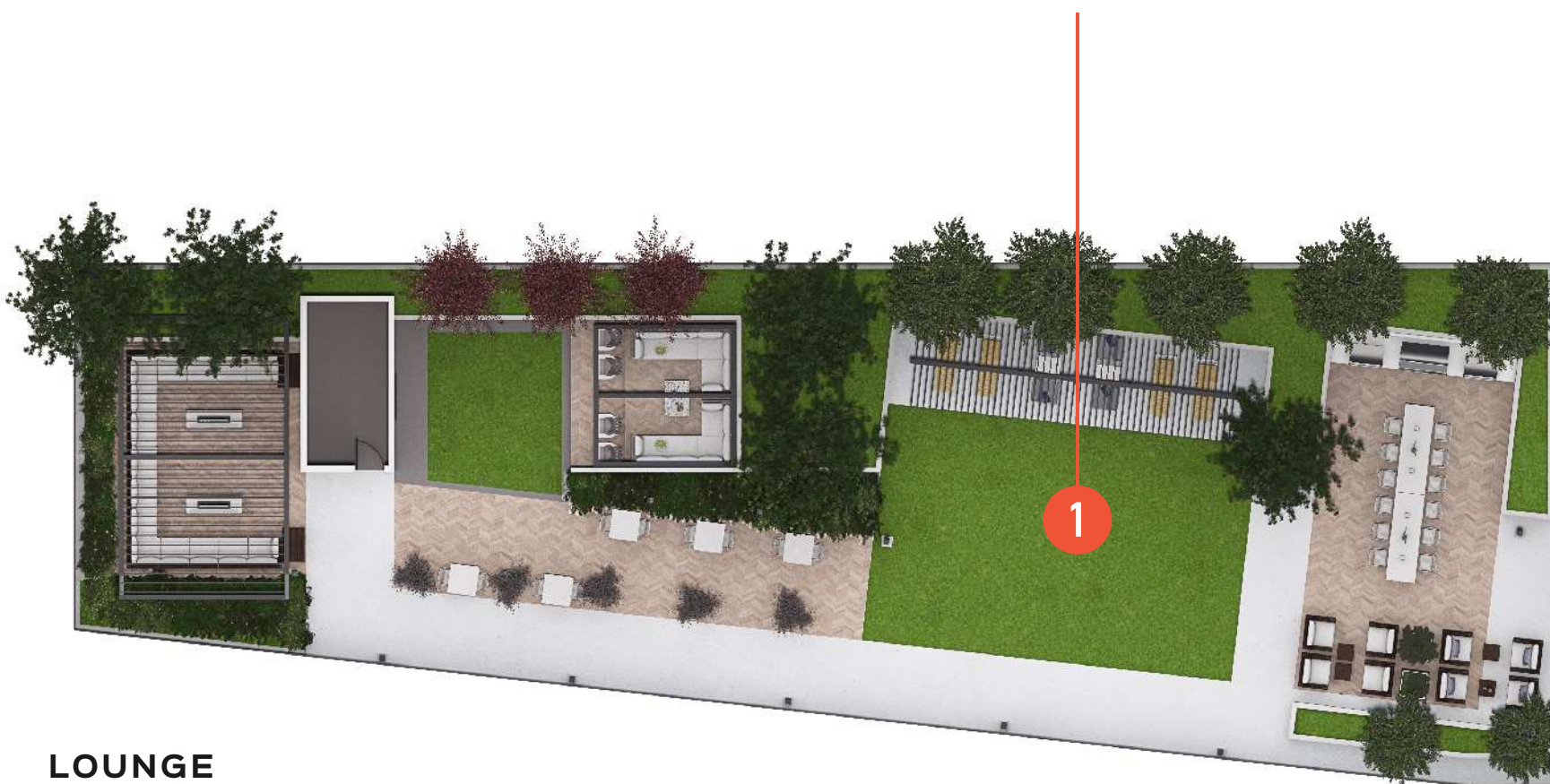
THE 13TH FLOOR

DINING ROOM



THE LIBRARY

TERRACE



*Artist's concept

LOUNGE



WASHROOMS



**13TH FLOOR
TERRACE**



13TH FLOOR
LOUNGE

*Artist's concept



THE 13TH FLOOR LIBRARY

*Artist's concept



13TH FLOOR
DINING ROOM

PIPER
10' SERIES

*Artist's concept

SUITES

SUITES

SUITES

Head up the elevators, over the geometric carpets, and past the hallway finishes and you'll arrive at your suite. Every suite has been crafted with large windows to offer ample natural light as well as spa-sized bathrooms, exceptional views, and custom-configurable layouts that allow you to maximize the space according to your lifestyle.

The décor packages for your kitchen and bathroom come in one of three design packages, to allow you the freedom to personalize your home to your taste.



PRIMARY
BEDROOM

*Artist's concept

PIPER
10' SERIES



LIVING +
DINING

*Artist's concept

*Artist's concept



DRIFTWOOD
10' SERIES

ENSUITE

REBECCA



*Artist's concept



PIPER
10' SERIES

PIPER
10' SERIES

*Artist's concept

INTO DOWNTOWN HAMILTON

REBECCA



As with all great cities, Hamilton offers a new experience whenever you step outside. The Rebecca's lobby leads out onto a pedestrian-friendly streetscape with cafe-style seating fronting the revitalized John Rebecca Park.



Head west and you're on James St. N., the site of the city's famous art crawl and the beating heart of its cultural scene.

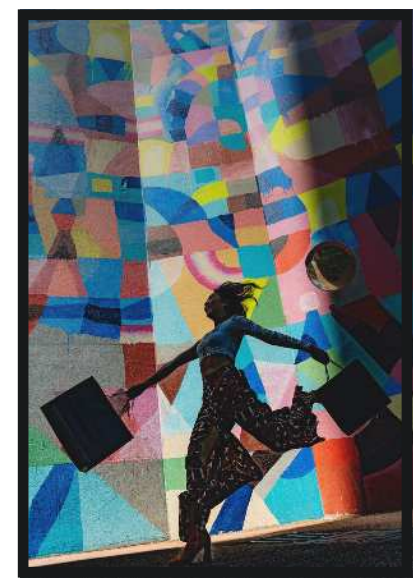


Head south and you'll find King William Street, a charming thoroughfare with some of Hamilton's signature bars and restaurants.



King William St.

James St. N.



Head south on James and you've arrived at Jackson Square, a shopping centre and transit hub neighbouring major attractions such as the Art Gallery of Hamilton, the Whitehorn Historic House and Garden, and Gore Park.



AND YOU'VE BARELY WALKED FIVE MINUTES FROM HOME. VENTURE A LITTLE FURTHER AND THERE ARE HUNDREDS OF SHOPS, MARKETS, HERITAGE BUILDINGS, RESTAURANTS, VENUES, GREEN SPACES, ALLEYS, AND TRAILS. EACH ONE REVEALS A LITTLE BIT MORE OF THE CITY.



THE REBECCA WILL BE OFFERING FOUR DEDICATED PARKING SPOTS FOR CAR-SHARE TO ENSURE THAT RESIDENTS HAVE QUICK AND EASY ACCESS FOR WHEN THEY NEED IT.

LIVE CONNECTED WITH CAR-SHARE PROGRAMS AND PLENTY OF PARKING CLOSE BY

With car-share programs and lots of nearby parking for you and your guests, The Rebecca makes it easy to park and drive.



There are several municipal parking lots close by that you or your visiting guests can use.

- 600m**
CAR PARK 81
11 Ferguson Avenue N.
- 650m**
CAR PARK 73
253 King William Street
- 300m**
CAR PARK 5
140 King William Street
- 750m**
CAR PARK 8
297 King Street E.



Community CarShare operates a fleet of 66 vehicles, available to members on a self-serve, pay-per-use basis.

3.6km
175 Longwood Road S.



The world's leading car-share network, with 3 convenient locations within a short walk from The Rebecca.

- 450m**
30 Vine Street
- 1.5km**
260 Victoria Avenue N.
- 1.6km**
55 Queen Street N.



One of Ontario's most established premier parking firms within minutes of The Rebecca.

- 200m**
115 King William Street
- 180m**
80 King William Street
- 230m**
112 King Street E.
- 58m**
73 John Street N.

- 300m**
140 King Street E.
- 650m**
140 Jackson Street E.
- 94m**
75 John Street N.
- 100m**
80 John Street N.



One of Canada's most trusted parking garage operators is nearby, offering short and long-term parking programs.

WALK, DRIVE, RIDE WITH EASE

The Rebecca is uniquely situated in the heart of Hamilton to facilitate access to all of the city's amenities. Between exceptional walkability and transit scores, you'll be able to reach the best of the city within minutes.



IF YOU'RE WALKING...

The Rebecca's location is within walking distance of everything you need. Shopping, dining, parks, entertainment, all just steps from your new home.



IF YOU'RE CYCLING...

The city is home to over 260km of on-street cycling lanes, a fact that has earned the Rebecca's address a bike score of 91.



IF YOU'RE DRIVING...

You're not far from the on-ramps of the 403 and QEW, as well as the Lincoln M. Alexander Parkway and Red Hill Valley Parkway. Don't have a car? No problem. The Rebecca also offers a flexible and convenient car sharing program.

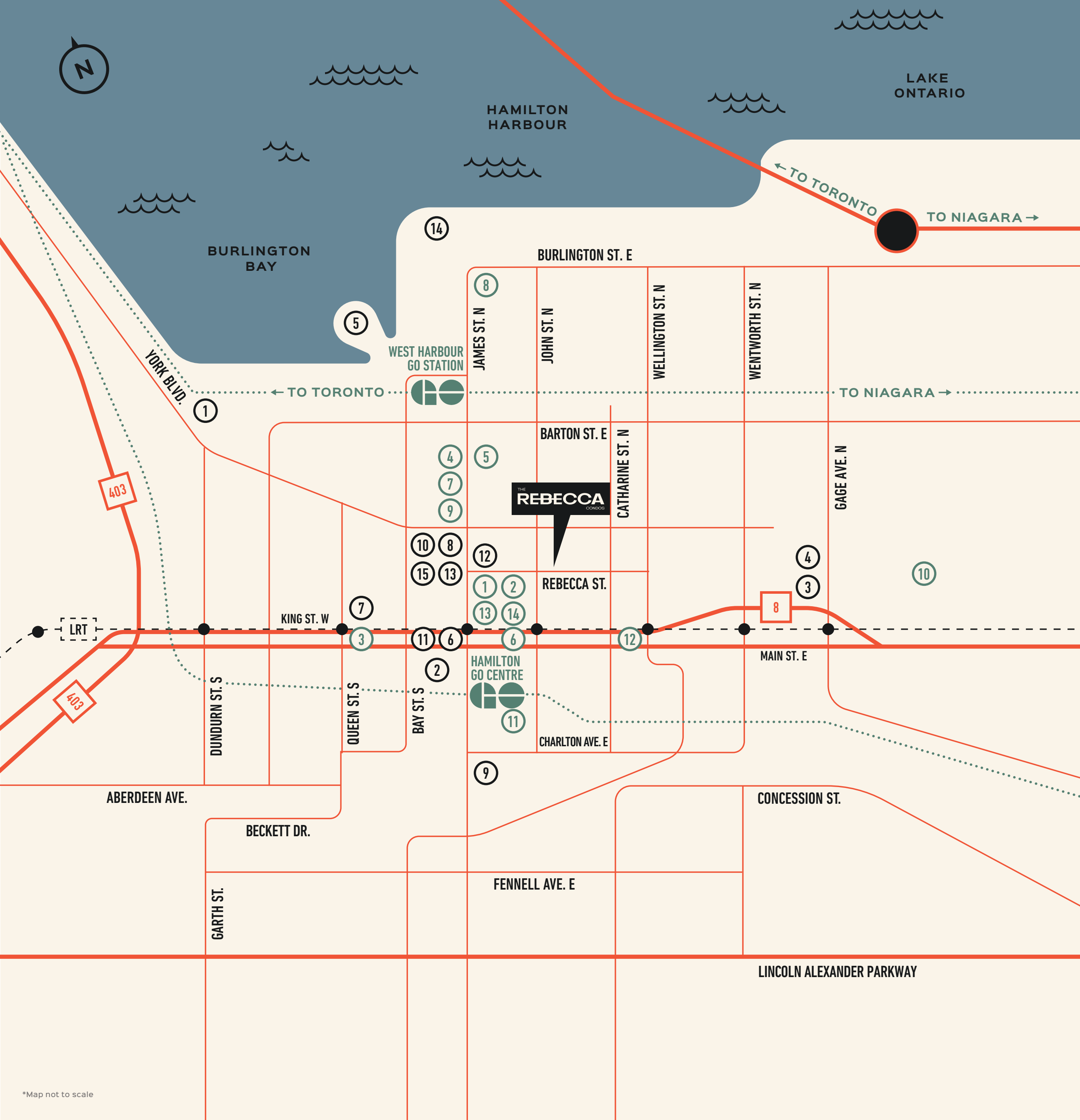


IF YOU'RE RIDING...

You're just 900m from the Hamilton GO Station and 1.2km from the West Harbour GO Station. Not only can you catch the GO train or bus from either of these locations, but these are also hubs for Hamilton Street Railway, the city's public transit fleet with over 260 buses offering reliable service throughout the surrounding area.



DISCOVER YOUR CITY



PLACES OF INTEREST

- ① DUNDURN CASTLE
- ② ART GALLERY OF HAMILTON
- ③ CANADIAN FOOTBALL HALL OF FAME
- ④ TIM HORTONS FIELD
- ⑤ BAYFRONT PARK
- ⑥ FIRST ONTARIO CONCERT HALL
- ⑦ CASBAH
- ⑧ HAMILTON FARMER'S MARKET
- ⑨ ST. JOSEPH'S HEALTHCARE HAMILTON
- ⑩ BATL AXE THROWING
- ⑪ MOMENTUM FITNESS
- ⑫ JOHN REBECCA PARK
- ⑬ HAMILTON PUBLIC LIBRARY
- ⑭ OUTDOOR SKATING RINK AT PIER 8
- ⑮ FIRST ONTARIO CENTRE

EAT & DRINK

- ① THE MULE
- ② THE FRENCH
- ③ ELECTRIC DINER
- ④ CARO ON JAMES
- ⑤ BORN AND RAISED
- ⑥ REDCHURCH CAFE
- ⑦ MULBERRY COFFEEHOUSE
- ⑧ GRANDAD'S DONUTS
- ⑨ CHOCOLAT ON JAMES
- ⑩ THE ORIGINAL TIM HORTONS
- ⑪ THE JUDGE
- ⑫ GASTRO MARKET
- ⑬ UNDEFINED
- ⑭ BERKLEY NORTH

EAT YOUR HEART OUT

Hamilton is home to an astonishing selection of restaurants, bakeshops, cafes, and bistros. Try the delicious brunch at Saint James Espresso Bar and Eatery. Savour the international cuisine at Denninger's. Try the baked good at Mulberry Coffeehouse. Refined burger joints, farm-to-table fine dining, made-from-scratch comfort food, eclectically delicious fusion — the list goes on.

All over Hamilton, you'll find eateries run by world-class chefs, some of whom honed their craft at Europe's Michelin-starred restaurants. Now, they're reimagining the possibilities for local ingredients.

7 RESTAURANTS TO REMEMBER

1

ANCASTER MILL

One of the city's most sought-after reservations, Ancaster Mill is a world-class restaurant built in a 160-year-old flour mill. Fresh, local, and seasonal dishes – with ingredients sourced from nearby farms and butchers – are served in the dining room overlooking the nearby waterfall and creek.



5

EARTH TO TABLE BREAD BAR

An award-winning restaurant venture that originally began with a cookbook, Earth To Table Bread Bar is built on shortening the gap between those who produce our food and those who eat it. With two locations in Hamilton, they offer a full range of house-baked pizzas, sharable plates, and meat dishes.



2

ABERDEEN TAVERN

The Aberdeen Tavern is a contemporary restaurant set in an old bank. Known for its quality comfort food and vintage cocktails, this is a big-city dining experience with hospitality you're unlikely to find elsewhere.

6

HAMBRGR

An establishment that has been working in pursuit of the perfect burger: well-made, with quality ingredients, complemented with a local craft beer. Simple and delicious.



3

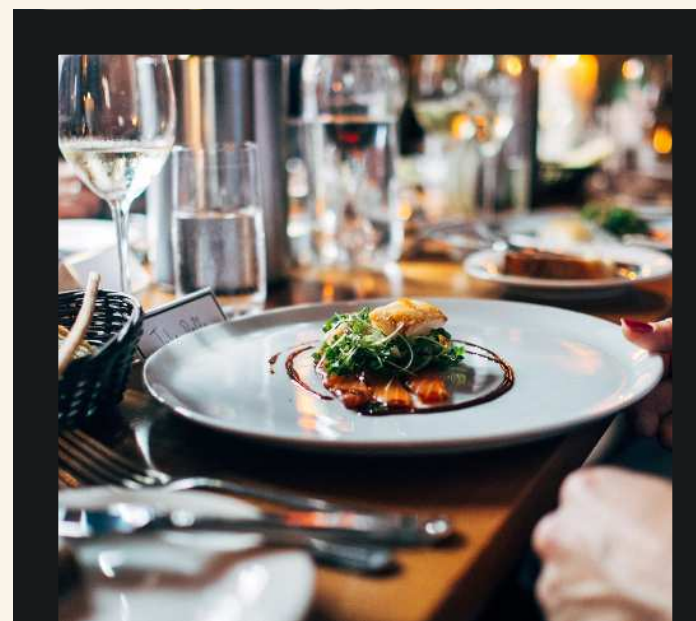
RAPSCALLION ROGUE EATERY

Self-described as “mischievous and vibrant,” this fashionable eatery offers a nose-to-tail eating experience with a rotating menu of creative and exotic Canadian dishes for sharing.

4

THE BURNT TONGUE

Some of the best soups in the city with a menu that changes with the seasons. You can get it at any of three fast-casual locations which also serve burgers, fries, salads, and sandwiches.



7

THE FRENCH

The French is a cozy and fashionable little bistro, with a marble bar, an open kitchen, and an excellent menu of authentic French staples: sourdough with butter, artisanal cheeses, locally raised duck, and more.

A NEW ART & MUSIC CAPITAL

Twice a month, just a few blocks from The Rebecca on James St. N., you'll find Hamilton's famous Art Crawl. Here the region's brightest creatives congregate among some of the city's most popular shops, restaurants, and bars. Street performers and local musicians entertain the crowds. Local vendors show off handmade goods.

Hamilton is also well known for its music scene, with intimate venues where acts like the Arkells played their early shows on their rise to rock stardom. You also don't have to travel to Toronto to see your favourite bands or comedians – they'll probably make an appearance at First Ontario Concert Hall.

HISTORIC VENUES, LEGENDARY SHOWS



1

THE CASBAH

For more than two decades, the Casbah has hosted an eclectic mix of local and international artists across genres, including indie rock, alternative, folk, and more.

2

MILLS HARDWARE

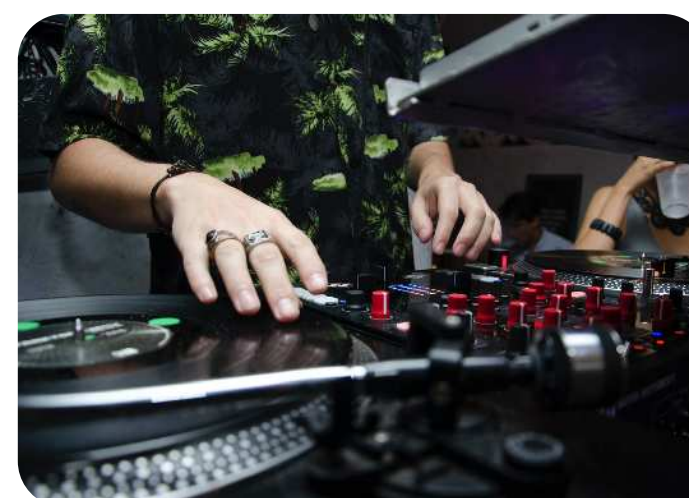
A former hardware store that features live music performances, comedy shows, and other events. Seating just 90 people, this intimate exposed brick venue has welcomed acts like the Tragically Hip, Joan Jett, and The Ramones.



3

THE MULE SPINNER

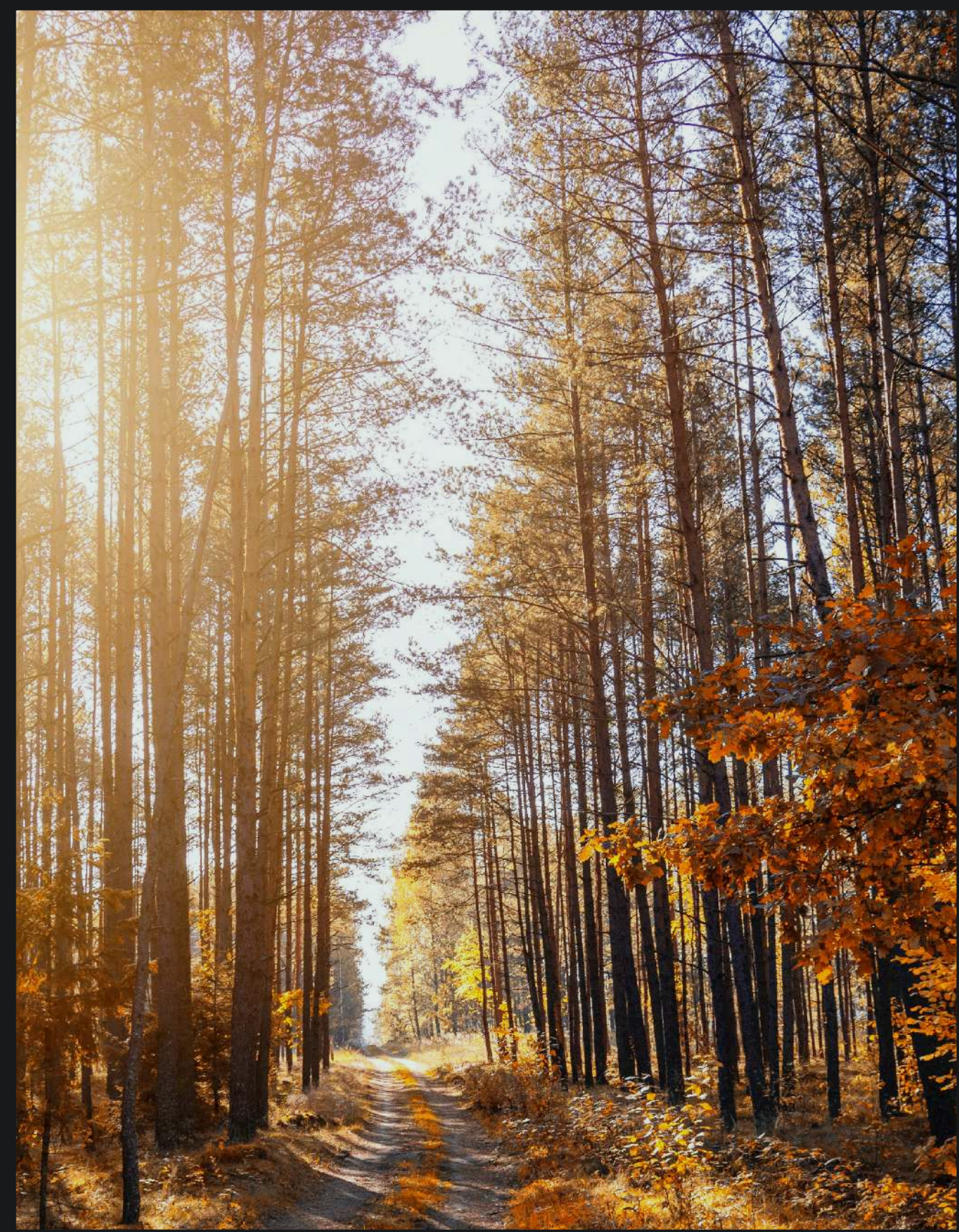
Located in the old cotton factory, the industrial backdrop of The Mule Spinner has been the stage for Hamilton's exceptional local talent.



4

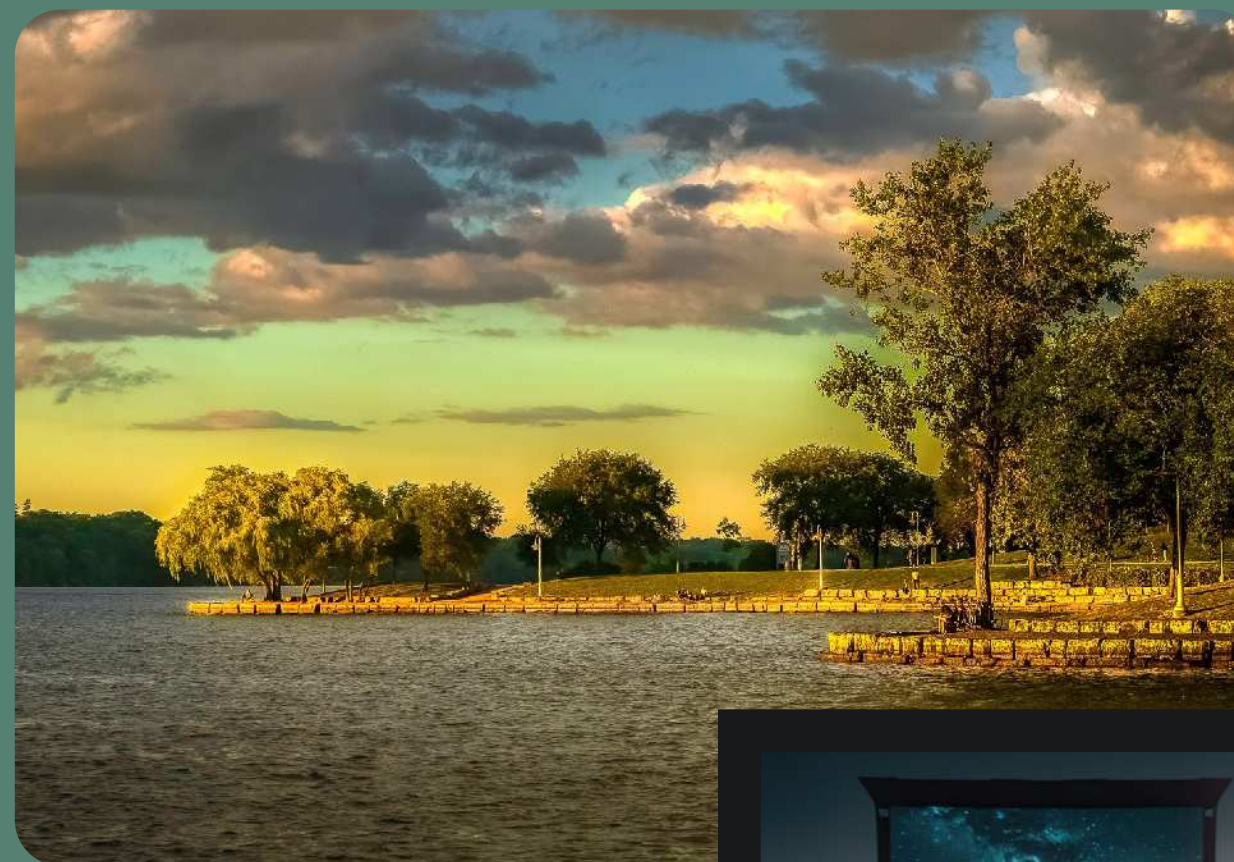
THIS AIN'T HOLLYWOOD

This Ain't Hollywood is a mainstay of the city's music scene. Known for its gritty and rock 'n' roll atmosphere, it's hosted a wide range of punk, metal, and indie acts.



ESCAPE TO THE ESCARPMENT

BAYFRONT PARK



STARLITE DRIVE IN THEATRE

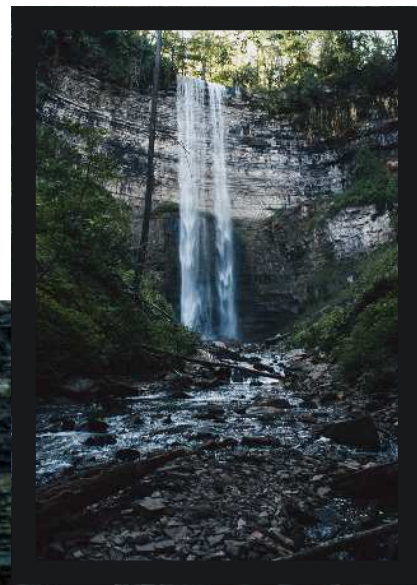


CHEDOKE GOLF CLUB

Hamilton is a natural playground for outdoor adventurers. Numerous trail systems wind through the breathtaking Niagara Escarpment, a UNESCO Biosphere Reserve known for its natural beauty.

There are exceptional golf courses, zip lining and tree-top trekking, and – for the more nostalgic – a drive-in that’s operated since the 1950s. The waterfront is its own retreat within the city, with gorgeous green spaces that often host festivals and events.

TEWS FALLS



DEVIL'S PUNCHBOWL



THE CITY OF WATERFALLS

Hamilton and the surrounding area are home to hundreds of picturesque waterfalls; a feature that has earned it the moniker “the waterfall capital of the world.”

From the 120-foot drop at Devil's Punchbowl to the equally impressive cascades at Webster's and Tews Falls, every waterfall offers an opportunity to venture into the gorgeous landscapes at your backdoor.



WEBSTER'S FALLS

COUNTRY VINEYARDS, URBAN BREWS

Living in Hamilton also means easy access to several award-winning wineries, cideries, and breweries. From the restored 19th-century skating rink turned brewery at Shawn & Ed Brewing Co., to the wineries of Stoney Creek, to the Hamiltonian institution that is Collective Arts.





Our Passion, Your Home

Since 1992, Rosehaven's portfolio has grown to include *over 9,000 homes and condos* across southern Ontario and the GTA. The combination of exquisite exterior and interior design, superior construction, and unparalleled customer service is what differentiates us as a builder.



The Vincent
VAUGHAN
Under Construction



KiWi Condos
HAMILTON
Recently Completed

We have now established a new tradition of excellence in mid- and high-rise construction, including right here in Hamilton. Along with The Rebecca, Rosehaven is also behind KiWi Condos on King William, a modernist addition to the city's art scene. Our other condo projects include Odyssey Condos and Towns, an award-winning lakeside condominium in Grimsby; The Vincent, a hotel-style residence at the Vaughan Metropolitan Centre; and Affinity Condos, an inspired mid-rise in Burlington. The centrepiece of Rosehaven's condo portfolio, however, is The Randall, an exclusive collection of luxury suites in Oakville.



Odyssey
GRIMSBY
Recently Completed

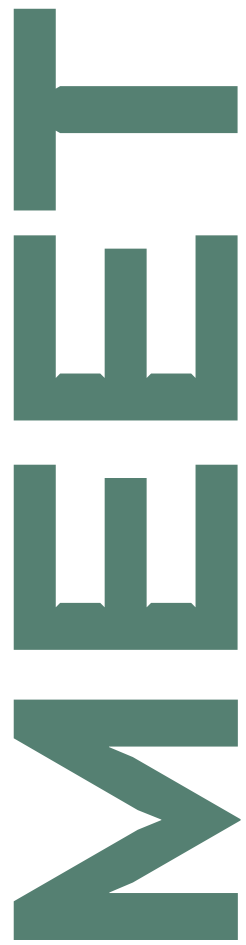


Affinity Condominiums
BURLINGTON
Completed

The Randall Residences
OAKVILLE
Completed



THE TEAM



THE REBECCA CONDOS IS **PROUD** TO WORK WITH THE FOLLOWING TEAM

COREARCHITECTS

ARCHITECT

We are an award-winning architectural firm based in Toronto, Canada.

Our team includes architects, interior designers, technologists, LEED, and BIM specialists. with focus on areas that include master-planning, residential, retail, interior design, commercial office, entertainment, and leisure.

Over the past 29 years, we have distinguished ourselves amongst our competitors not only with our innovative architectural and interior design but also in the relationships we have fostered.

FIGUR3

INTERIOR DESIGN

Figure3 understands that living environments are more than just the physical space. They need to evoke an emotional response in people which inspire an energized and centered lifestyle. With a philosophy deeply rooted in purposeful and timeless interior design, Figure3 leverages design-based research to elevate the living experience. Local and international clients benefit from Figure3's 25 years of cross-industry insights and a highly collaborative process – connecting people to place.



LANDSCAPE ARCHITECT

Established in 2008, and incorporated in 2010, adesso design inc. is a full service landscape architectural firm. Our areas of expertise include residential design, condominiums, green roof and rooftop amenity spaces, municipal park design, playgrounds, trails, urban design, environmental restoration, visual impact assessments, and stormwater management.

At adesso design we believe that the success of any project relies on a strong team. We have aligned ourselves with a network of consultants with similar principles and a commitment to innovative design. Our range of experience and our diverse team allow us to adapt to the specific needs of any project regardless of size or complexity.



SALES

A spectrum connects two opposite, yet equally crucial parts of a process. While the condominium industry traditionally sees builders and buyers in two vastly different lights, Spectrum Sky is the colour that brings them together. We are a Sales and Marketing company that will parallel your position in today's marketplace contributing to elevating your brand name. We are UN REAL ESTATE.



REBECCA SALES OFFICE • HAMILTON



MARKETING

From the crafting of a single line of text, to the sculpting of an image, from capturing a setting, or creating a complex automated marketing campaign - we are a group of gifted individuals who thrive at conquering space and time so that each brand that we partner with stands above the chaos.

