

freed

omur

MODERN LUXURY AT DUPONT & SPADINA

The bold blend of steel and glass cuts an impressive swath through the cozy confines of the Annex neighbourhood. ANX is redefining the formerly industrial stretch of Dupont with a striking, futuristically minimalist statement. The long panes of glass stretch from top to bottom in thin vertical rectangles, highlighted by sleek metallic trim. This contrasts beautifully with the smooth curves of the balconies, making the whole more than a sum of its dramatically unique parts.



Illustration is artist's concept only.



Illustration is artist's concept only.

Dramatically
Minimalist



Illustration is artist's concept only.



Illustration is artist's concept only.

Amenities Above & Beyond

Keeping with the strikingly minimal exterior, award-winning designer Johnson Chou is creating an interior landscape that reflects a blend of luxury and refined restraint. It's your entry to a world of amenities as artfully designed as the building itself.



Illustration is artist's concept only.



Illustration is artist's concept only.

Lobby



Illustration is artist's concept only.

Fitness Centre

Your Suite Your Canvas

The interior of each ANX suite provides the perfect starting point of minimal design, allowing you to maximize your personal aesthetic within. Striking open concept layouts and floor-to-ceiling windows create an airy, luminous feel throughout every room. The rich blend of features and finishes, carefully curated down to the smallest detail, ensures each sleek, sophisticated space remains warm and inviting.

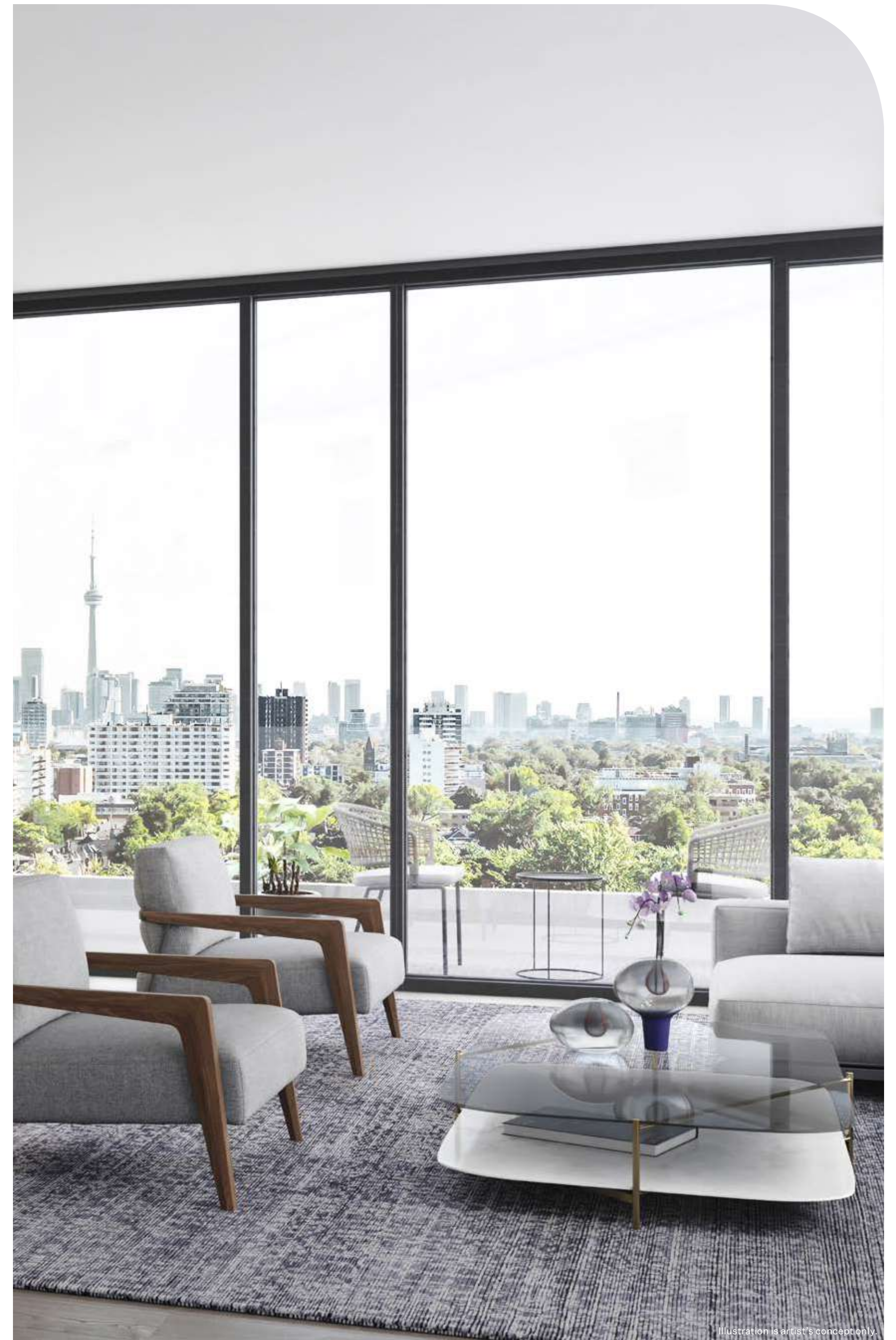


Illustration is artist's concept only.



Living/Dining



Illustration is artist's concept only.

Living/Dining



Penthouse Suite



Illustration is artist's concept only.

Bathroom

Features & Finishes



THE MODERN COLLECTION

Overview

- Approximately 9' smooth painted white ceilings in all principal rooms
- Floor-to-ceiling windows
- Concrete balconies with architect designed glass and metal handrails
- Glass and metal guards at Juliet balconies
- Solid core entry door with security view-hole
- Front loading stacked washer/dryer
- Capped junction boxes for ceiling lighting in living, dining and master bedrooms
- Recessed lights in the foyer and hallways

Flooring

- Wide plank engineered hardwood flooring
- Porcelain tile flooring in bathrooms and laundry closet

Kitchen

- European-style cabinetry
- Quartz countertop with ceramic tile backsplash
- Stainless steel, under-mount sink with polished chrome, single lever faucet
- Integrated, energy efficient 24" European appliances
- Ceiling mounted track lighting

Bathrooms

- European-style vanity
- Under-mount porcelain sink
- Custom quartz countertop and backsplash with integrated shelf
- Mirror above vanity with integrated lighting
- Polished chrome bathroom plumbing fixtures
- White tub
- Frameless glass shower enclosure
- Full height porcelain wall tiles in tub and shower enclosures
- Recessed ceiling lights
- Pressure mixing valve for tub and shower

The Modern Collection provides a complete list of features and benefits, designed to exceed the expectations of homebuyers in every way. Yet for those who desire even more, we've created the Luxury and Penthouse Collections. Select either and enjoy all the elegant features and finishes that are part of the Modern Collection, along with some stunning additional upgrades – like marble tile flooring in the ensuite bathrooms and chef-quality kitchen appliances.

THE LUXURY COLLECTION

Overview

- Full-sized, front loading, stacked washer/dryer

Flooring

- Marble tile flooring in master ensuite bathroom

Kitchen

- Quartz countertop and backsplash
- Island with quartz waterfall countertop
- Stainless steel, under-mount sink with a polished chrome, single lever kitchen faucet with pull out spray
- Integrated, energy efficient 30" European appliances
- Ceiling track light and capped junction box over island

Bathrooms

- Under-mount porcelain sink(s) with custom marble countertop and backsplash
- Soaker tub with wall mounted, polished chrome, single lever faucet and tub filler
- Master Ensuite – Full height marble wall tiles in tub and shower enclosures
- Master Ensuite – Thermally controlled mixing valve for tub and shower

THE PENTHOUSE COLLECTION

Overview

- Level 12 – Approximately 10' smooth painted white ceilings in all principal rooms
- Level 13 – Approximately 11' smooth painted white ceilings in all principal rooms
- Laundry sink
- Gas line connection at balcony

Kitchens

- Chef quality integrated, energy efficient 30" appliances
- 30" induction cook top
- Under counter wine fridge
- Under cabinet LED lighting



Illustrations are artist's concept only.

Freedhome Smart Living Lives Here

FreedANX believes in the benefits of residents living their greenest life. That's why we're committed to installing amenities such as electric charging stations for vehicles, secure indoor bicycle storage and individual suite metering for hydro and water, all of which allow you to save energy and money.

FUNCTION MEETS FORM

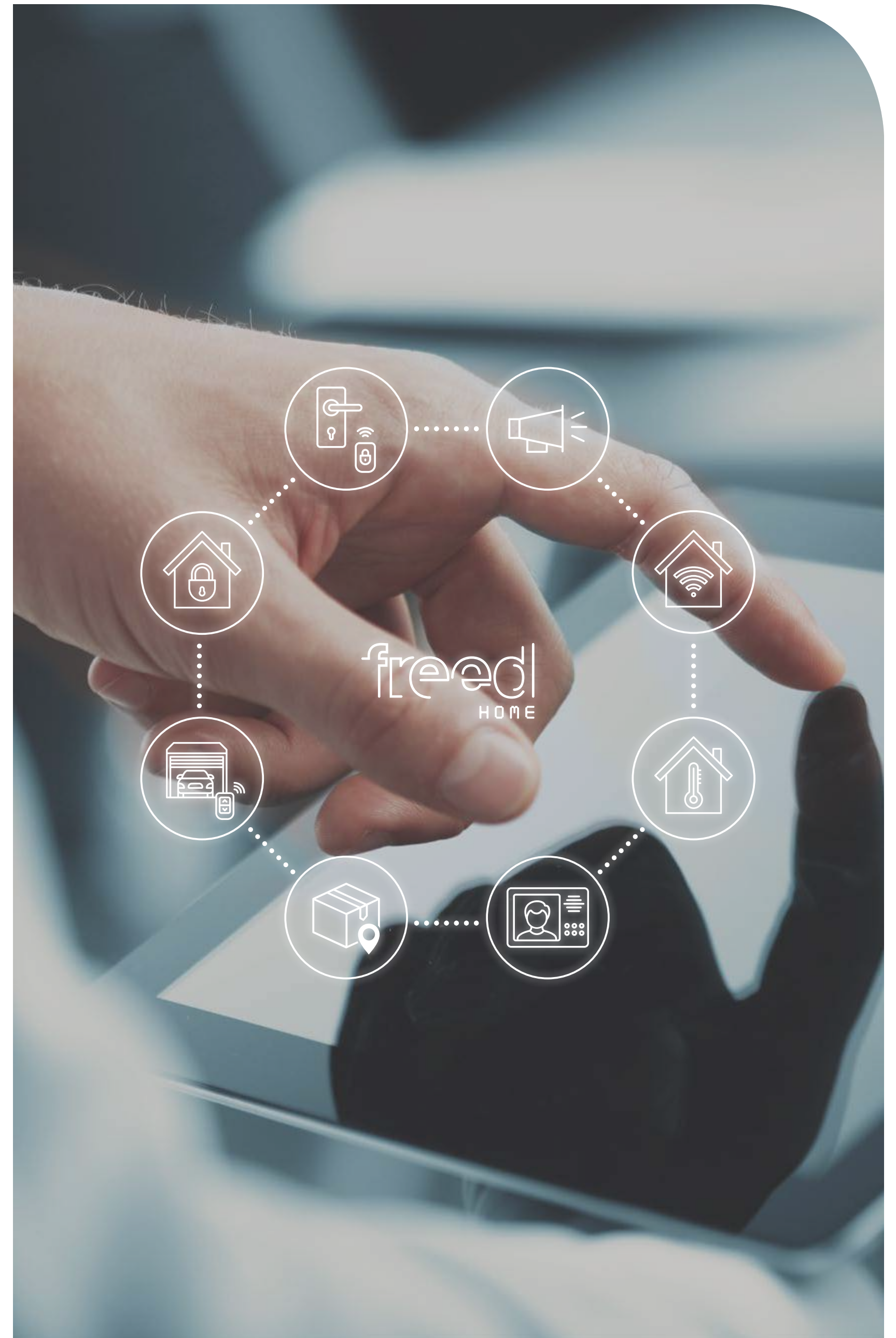
FreedHome is a state-of-the-art, yet easy to use, smart home technology package that delivers convenience, security and peace of mind.

- Never worry about keys again, as you and your family will have complete smart-tech access to the building, parking garage, common areas and your suite
- Quickly gain building access with smart-tech recognition technology
- Remote interaction ability with concierge in real-time
- Receive real-time package delivery notifications directly to your smartphone

THE PROGRESSIVE EDGE

- Rely on the Community Board function to stay up-to-date on key building announcements
- Provide friends, extended family, babysitters, dog walkers and housekeepers with remote entry
- Never miss a moment when you're connected to our unlimited high-speed internet

All specifications are subject to change without notice. E.&O.E.



Landmark Design Shaping The New Dupont

Welcome to the New Dupont, a stretch of city street that is quickly emerging as one of Toronto's most desirable neighbourhoods.

Here, beautiful heritage homes mingle seamlessly with distinctly modern structures, with ANX forming one of the centrepieces of the area.



Illustration is artist's concept only.



Illustration is artist's concept only.



Dupont Station

Dupont & Spadina is home to the soon-to-be revamped Dupont station on the Yonge-University line. You can get to either Union Station or Yorkdale Shopping Centre in under fifteen minutes. With the Bloor-Danforth subway line also ready to whisk you east or west, and the Spadina streetcar travelling all the way to Harbourfront, you're in a very convenient location.

An Area Rich in History

The Annex retains its name from the time right before it joined the City of Toronto in 1886. It continues to embrace every influence of the nearby university and provides the ideal community for open minds and high achievers. Scholars and faculty of two centuries have called it home, along with the city's founding families, the Eatons and Gooderhams.





Casa Loma

Meaning Hill House in Spanish, Casa Loma was completed in 1914 and was briefly the home of Sir Henry Pellatt. Its bold Gothic Revival architecture was courtesy of builder E.J. Lennox, who designed a number of other stand-out structures around the city.

Today it stands as a museum and event space. The castle is also a popular place for weddings and private parties. There is a restaurant as well as a series of escape rooms to test the wits of those game for adventure.



LEFT
Casa Loma Lookout
Casa Loma Conservatory

Perfectly preserved in all its ornate splendor.
Visitors can revel in the opulence of a bygone era.

RIGHT
Spadina Museum



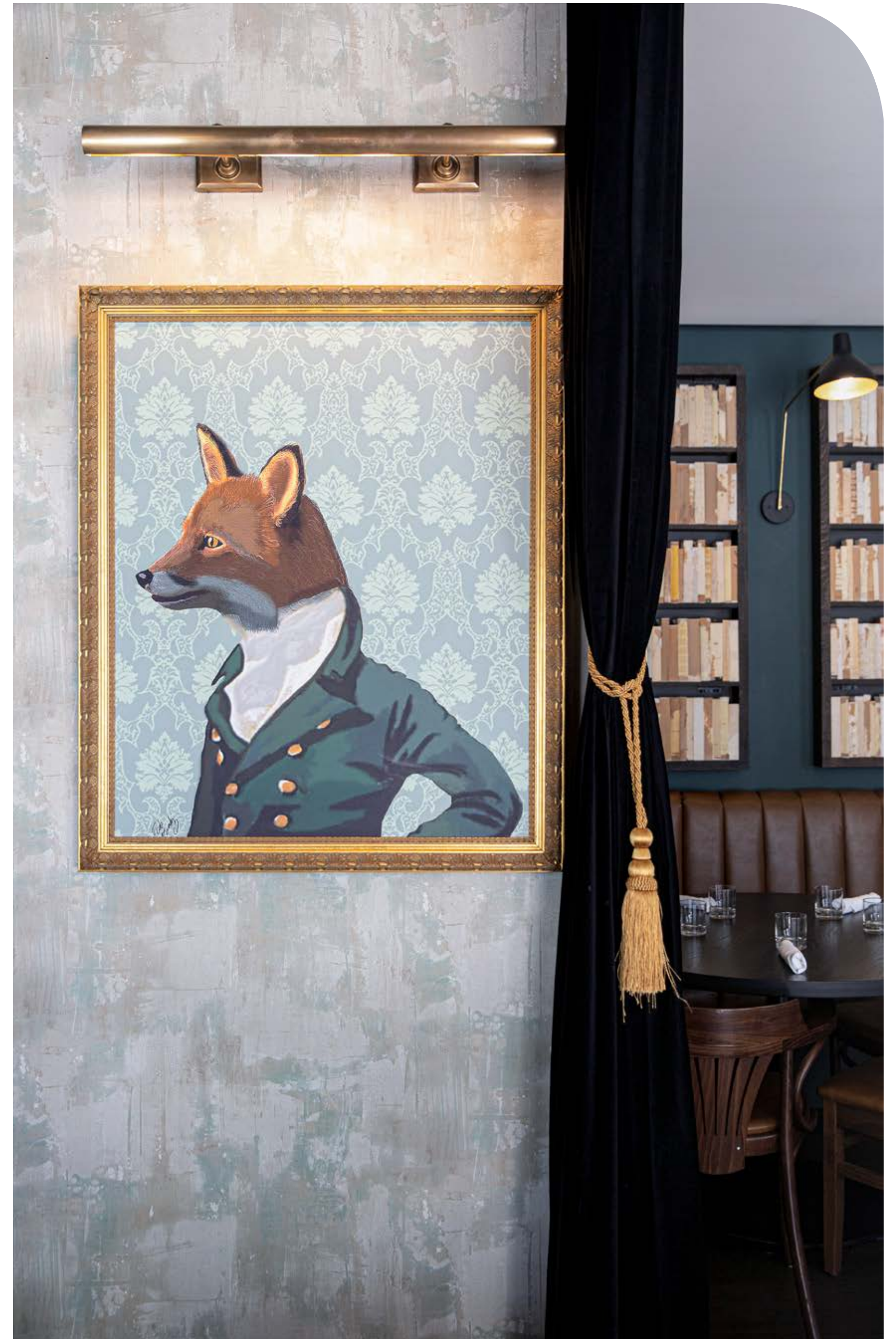
Originally built in 1866, this large, restored home of the wealthy Austin family provides a glimpse of styles and technologies from the mid-Victorian era to the 1930s.

The Annex

An Iconic Toronto Neighbourhood

The Annex is a boundless source of inspiration, where young and old enjoy its many green spaces, cycling trails and the pure vibrancy of Bloor Street. It's no wonder it is also home to renowned architects, journalists and professors from every centre of learning.

The Annex has an almost perfect Walk Score, and it's easy to get around by bike. The dedicated bike lanes on St. George Street, Davenport Road, and Bloor Street can take you in every direction. Whether it's linking to the Beltline or cruising south to Lake Ontario, The Annex is the ideal mid-town starting point.

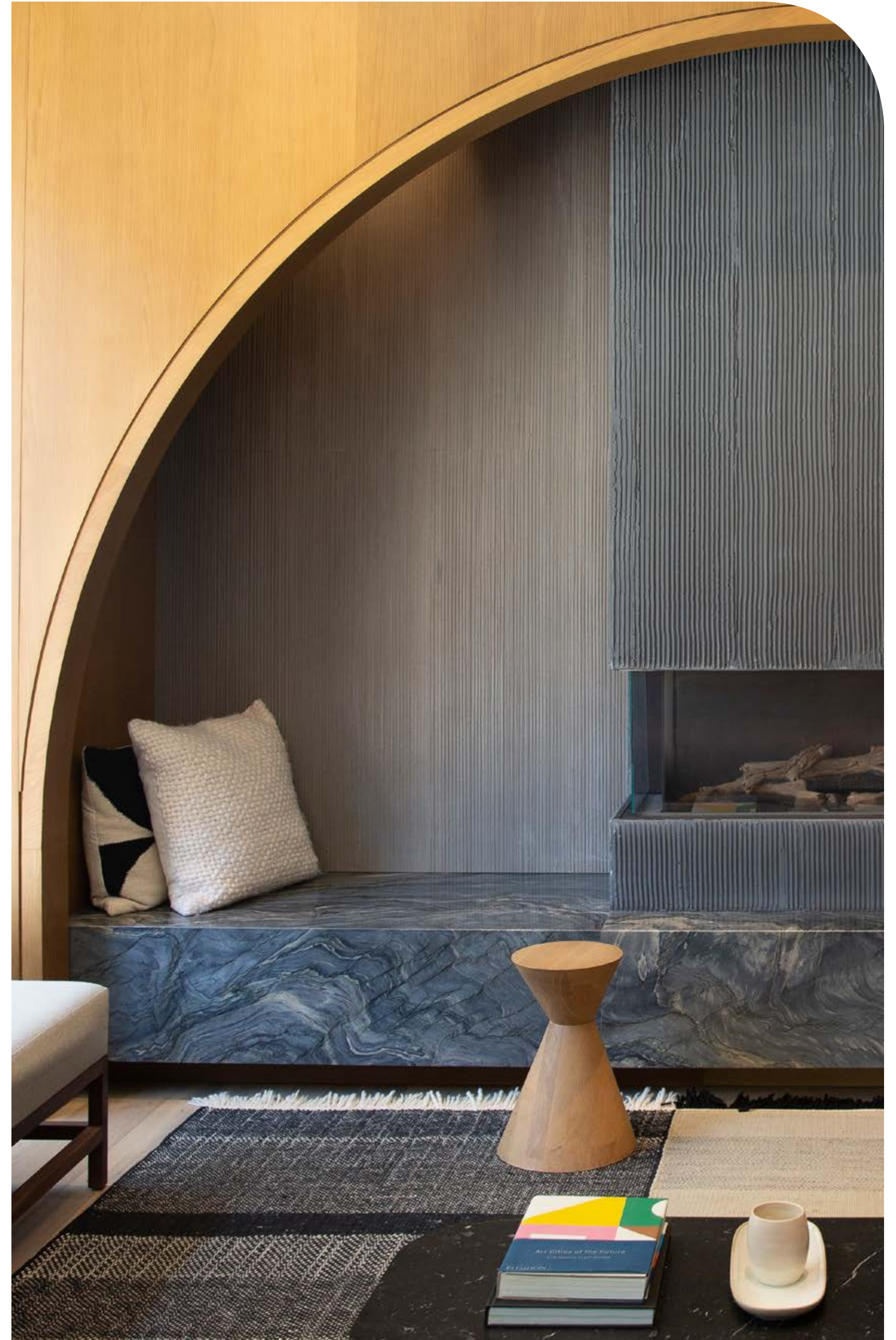


LEFT
Bata Shoe Museum
Flur Shop

RIGHT
Saint George Hotel



A unique enclave with well preserved historic homes, a wealth of cultural and entertainment landmarks, wonderfully eclectic stores, pubs, restaurants and boutiques, the Annex captures the imagination and serves up truly memorable experiences.





LEFT
Fat Pasha
Opus Restaurant

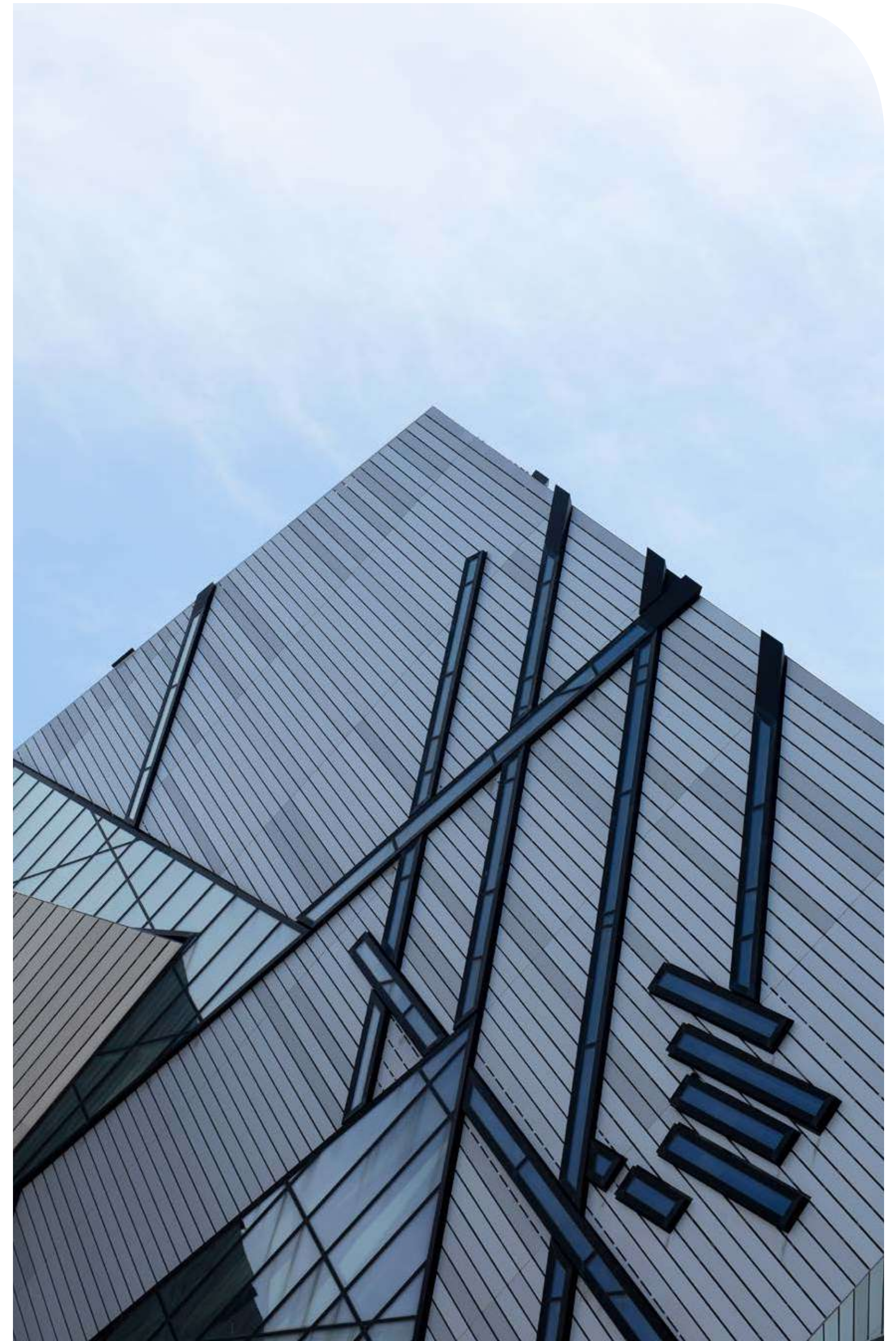
Ideally situated one block south of Casa Loma and Spadina Park, The New Dupont begins right here in the Annex. This area is fast becoming the destination of choice for dining and entertainment experiences in the city. Within one block you will find Fat Pasha, Playa Cabana, Rose and Sons Deli, Big Crow and Opus Restaurant, Madame Boeuf and Flea, Schmaltz Appetizing, Live Organic Bar and MoOng Sushi.



Artisanal flair is never ending, with Haute Coffee, Ezra's Pound, Creeds Coffee Bar and First and Last Coffee Shop all boasting the best bean experience. From Blueblood Steakhouse to Chadwick's Craft Kitchen & Bar, find so many places to savour within one city block of ANX.

Culture Corridor

Discover hundreds of cultural events of every kind along this incredible mile-long corridor, which includes a stunning array of museums, galleries, the Royal Conservatory of Music, concert auditoriums and the Miles Nadal JCC. You'll also find the legendary Hot Docs Cinema, Lee's Palace and over 500 buildings in the Annex protected by the Historical Board of Canada.



LEFT
Hot Docs Cinema
Paupers Pub

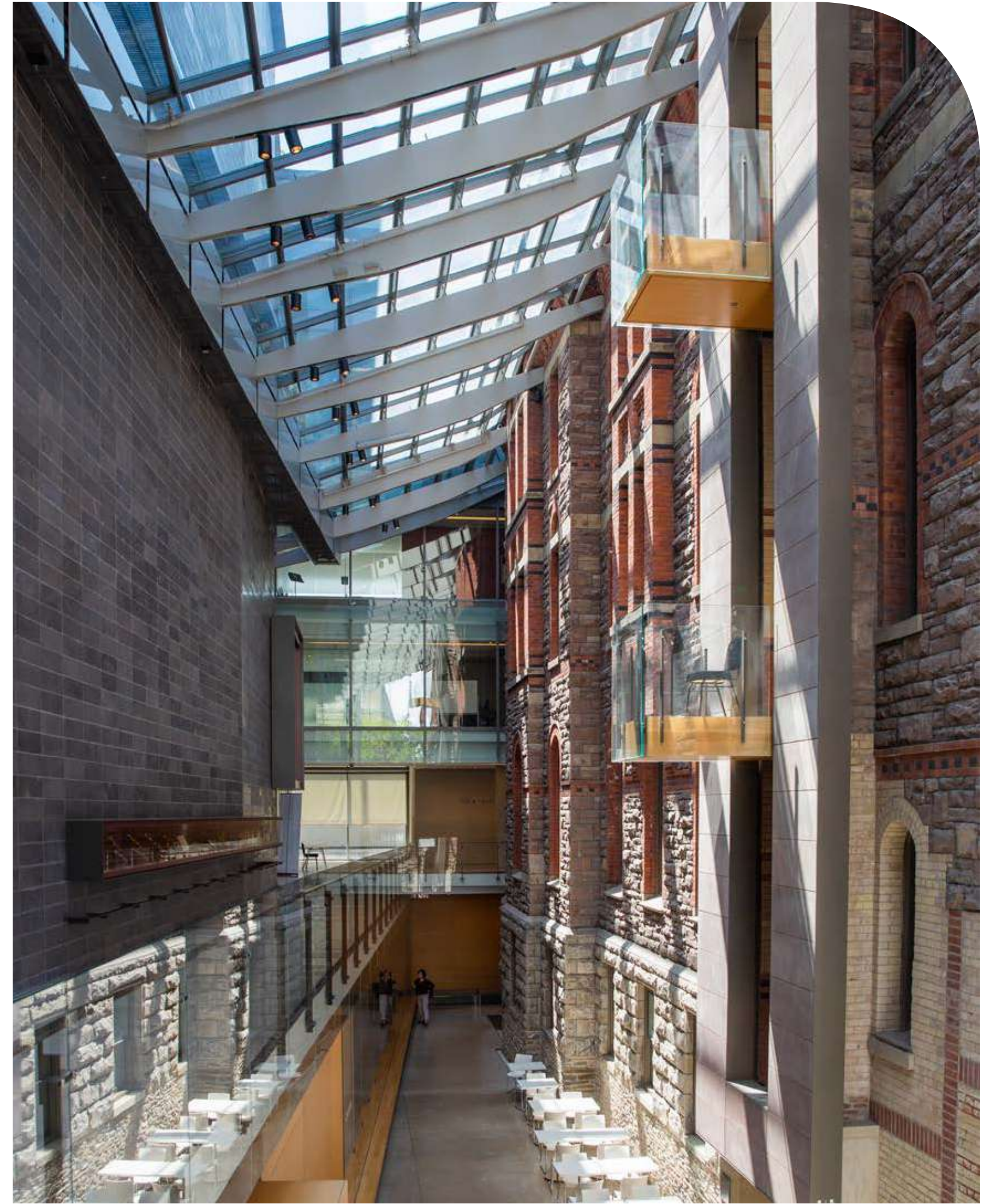
RIGHT
Gardiner Museum





LEFT
 Randolph Centre for the Arts
 Koerner Hall

RIGHT
 Royal Conservatory of Music



For classical encores, take your pick of Koerner Hall, Randolph Centre for the Arts, the Music Gallery, and Tafelmusik Baroque Orchestra. Not to mention, you're surrounded by every big name in the art world with galleries like Hazelton, Alan Klinkhoof and Galerie de Bellefeuille all nearby.



Yorkville

Known both for its exclusive shopping and exquisite dining, Yorkville's narrow lanes and tree-lined streets invite you to discover your favourite bistro or boutique—tucked away just steps from Yonge & Bloor and the bustling city beyond.



LEFT
Sassafras
Café Boulud by Four Seasons

RIGHT
Sushi Masaki Saito

Celebrity-spotting is a Yorkville tradition – and with restaurants like these dotting the area, it's no wonder that both the famous and not-so-famous often gravitate here.

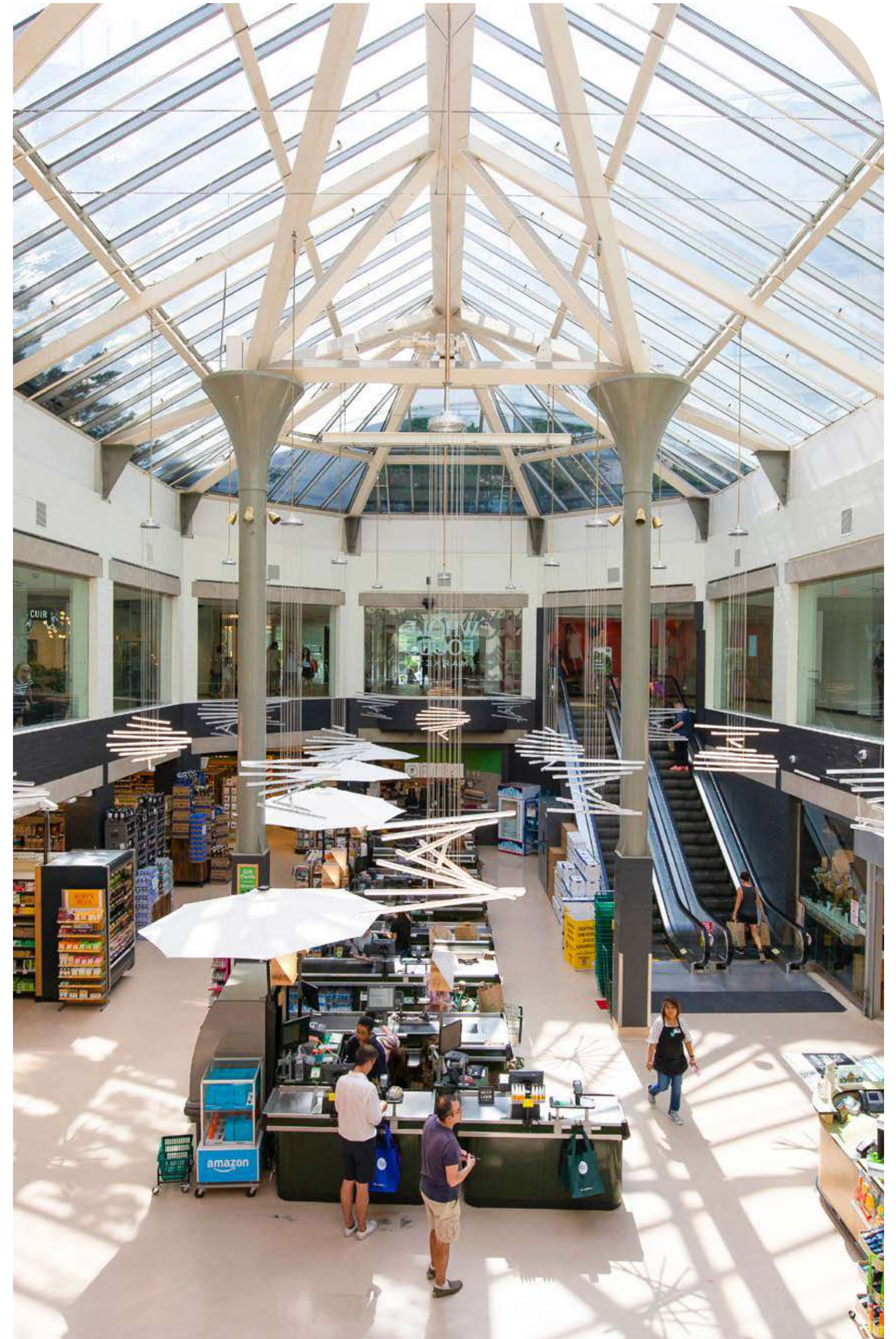
LEFT
Yorkville Village
Jacked Up Coffee



RIGHT
Whole Foods Market



Yorkville Village is an upscale shopping centre that features a diverse selection of boutique experiences. Through its marbled hallways, you will find a unique blend of luxury fashion boutiques, charming home decor spots, hair and beauty salons, eateries and a specialty grocery store.



HOLT RENFREW



Luxurious Bloor

The stretch of Bloor Street West from Yonge to Avenue Road is home to some of the world's most famous and exclusive fashion houses. Holt Renfrew takes department store shopping to a new level of lavishness.



LEFT
Louis Vuitton
Prada

Whether you're making your way down Bloor Street, or exploring Yorkville, you'll quickly realize that this is a place that takes style seriously.

RIGHT
Gucci



Strolling this fashionable strip, you will be witness to a rich tapestry of luxury icons.

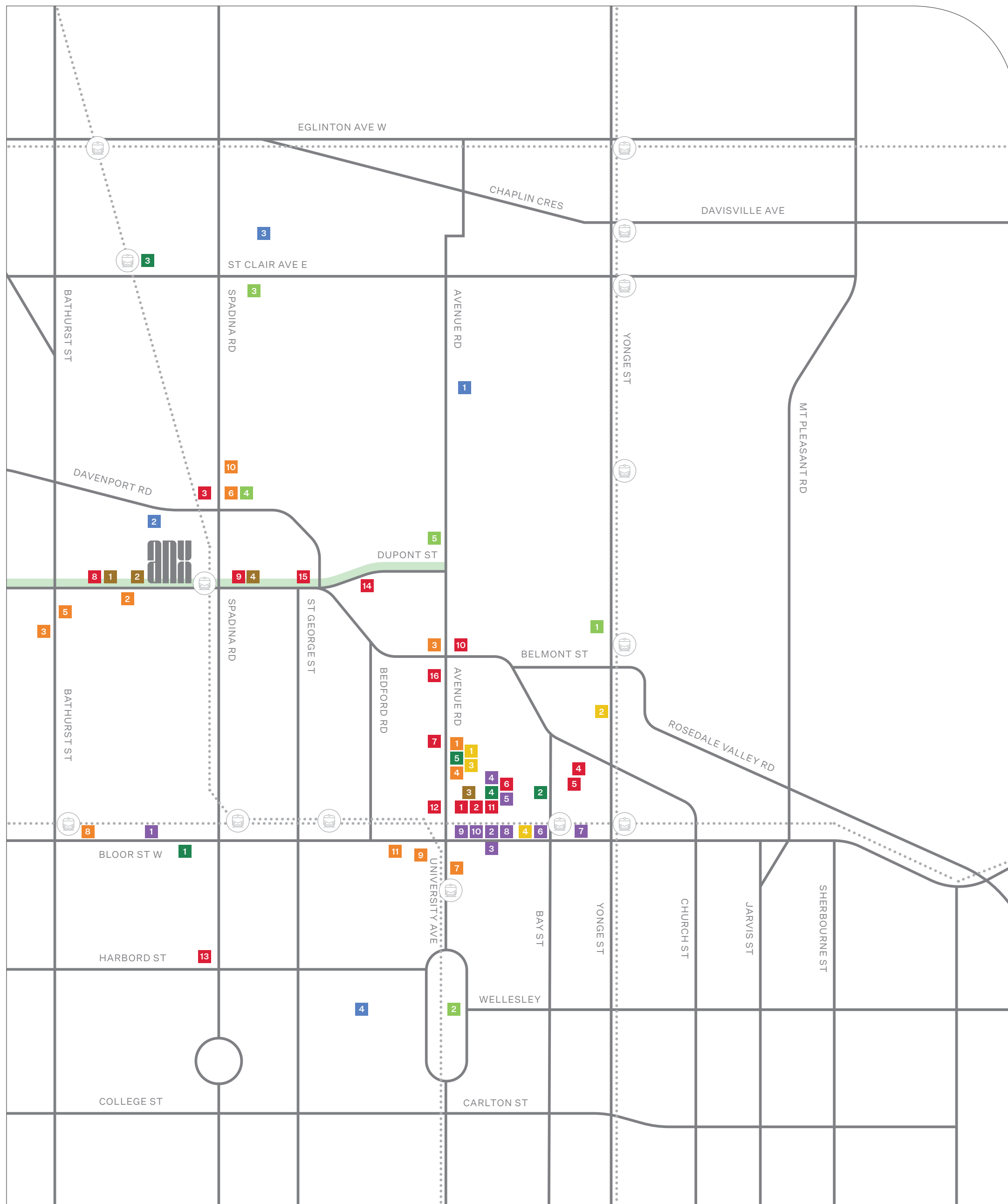


Illustration is artist's concept only. Map is not to scale. E.&O.E.

Groceries

1. Metro
2. Pusateri's
3. Loblaws
4. The McEwan Group
5. Whole Foods Market

Parks

1. Ramsden Park
2. Queens Park
3. Sir Winston Churchill Park
4. Spadina Park
5. Sergeant Ryan Russell Parkette

Education

1. De La Salle College Oaklands
2. George Brown College
3. The Bishop Strachan School
4. U of T, St. George Campus

Restaurants

1. Alobar Yorkville
2. Bar Reyna
3. BlueBlood Steakhouse
4. Buca Osteria & Bar
5. Café Boulud at Four Seasons
6. Chabrol
7. Estia
8. Fat Pasha
9. Fet Zun
10. Joso's
11. Kasa Moto
12. Morton's
13. Piano Piano Restaurant
14. Playa Cabana
15. Rose and Sons Deli
16. Sotto Sotto

The Green Line

Toronto's newly proposed 5km linear park

Galleries & Entertainment

1. Galerie De Bellefeuille
2. Struck Contemporary
3. Peter Triantos Art Galleries
4. LUMAS Gallery
5. Barbara Edwards Contemporary
6. Casa Loma
7. Gardiner Museum
8. Hot Docs Ted Rogers Cinema
9. Royal Ontario Museum
10. Spadina Museum
11. The Royal Conservatory of Music

Fashion

1. Theodore 1922
2. Gucci
3. Cartier
4. Chanel Toronto
5. Christian Louboutin
6. Harry Rosen Menswear
7. Holt Renfrew
8. Hermès
9. Louis Vuitton Toronto
10. Tiffany & Co.

Fitness

1. Equinox Yorkville
2. Rosedale Club
3. SoulCycle YKVL Yorkville
4. Barry's Bootcamp Yorkville

Cafés

1. Creeds Coffee Bar
2. First & Last Coffee Shop
3. Sorry Coffee Co.
4. Ezra's Pound

“If we can create spaces that inspire people and improve their quality of life, then I believe we’ve succeeded.”

PETER FREED
Chief Executive Officer, Freed Developments

The Creator



PETER FREED

freed

For over 25 years, Freed has been changing the face of the city with its unique brand of design-based development. The company, with 9,100 units and \$5.48 billion in real estate assets developed, has been the driving force behind the remarkable transformation of King Street West and beyond. A Freed property is more than just a building, it's a lifestyle hub. It's a place where people work near where they play, in buildings that make a true design statement. Freed's portfolio includes hospitality ventures, resort communities and commercial spaces that become home to residents and some of the city's best retail tenants alike.



ART SHOPPE LOFTS + CONDOS



FASHION HOUSE



150 REDPATH + 155 REDPATH



75 PORTLAND



346 DAVENPORT



LAVELLE

The Team



TEEPLÉ ARCHITECTS

Over the past 30 years Teeple Architects has built a reputation for thoughtful city-building through innovative design and technical excellence, primarily through a broad range of high-profile public and private sector projects. Recognized as one of Canada's leading architectural firms, Teeple Architects has been honoured with awards for design excellence, urban vision and sustainability on the local, national and international levels.



JOHNSON CHOU INC. INTERIOR DESIGNER

Founded in 2001, Johnson Chou Inc. is an internationally recognized interdisciplinary design practice encompassing architecture and interiors, furniture and product design. By creating "narratives of inhabitation," be it for residences, office or retail space, the studio's projects are characterized by forms imbued with metaphoric content and richness of detail –spaces that are both experiential and immersive "portraits" of their clients.